
SECTION 1**Community Profiles****County History**

Mississippi County is located in what was formerly known as “Tywappity Bottom.” The county is bordered by the Scott County Hills on the north, St. James Bayou on the south, the Mississippi River on the east. Little River borders the county on the west.

By 1820, settlements had been established in most of the present counties of Southeast Missouri. The settlers, largely farmers, came from Illinois, Kentucky, Tennessee, and Virginia, in search of fertile and cheap land, which they found around Charleston. The Mississippi and Ohio Rivers join here and provided immediate access to river transportation. The Dorena-Hickman Ferry is the only Mississippi River ferry still in existence from Ste. Genevieve, Missouri to Louisiana.

The site of the present City of Charleston was originally entered in 1830. In 1837, Thankful Randol sold Joseph Moore 22.5 acres of land and the city of Charleston was immediately laid out. Its original boundary was twelve blocks – four north and south and three east and west. Mississippi County was organized on February 14, 1845, from Scott County and was named for the Mississippi River.

Although Mississippi County became a county in 1845 and the clerk’s office was built in 1846, it was not until 1852 that county court officials authorized construction of a frame courthouse in Charleston. The courthouse reportedly burned in 1891. After the fire, county business was conducted in two small brick offices on the square and in the opera house until 1900. The Mississippi County Courthouse stood on the courthouse square from 1901-1997, when it was destroyed by fire on February 10, 1997. The County Clerk still maintains a permanent record of the governing body of the county, dating back to 1845. An act to incorporate the City of Charleston, Missouri, in the County

of Mississippi was enacted by the General Assembly of the State of Missouri on March 25, 1872.

Geography and Climate

Mississippi County, Missouri, is located in Southeast Missouri and is the easternmost county of the state. Interstate 57 goes through Charleston and Interstate 55 is located ten miles west providing excellent four-lane access to cities north and south. Highway 60 also runs through Charleston and provides an east-west link.

Mississippi County is also the northernmost portion of the Mississippi River Embayment formed over time by sediments from the Mississippi River. Soils are rich, topography flat, and historically, farming has been the primary industry. The county is part of the Mississippi River and Tributaries Project and is protected by 500-year levels. The region has not been flooded from river flooding since 1937.

The climate in Mississippi County ranges in temperatures from an average high of 91 degrees in August to an average low of 24 degrees in January. Between 1963 and 2010, average precipitation in Mississippi County was 47.3 inches according to the National Climatic Data Center. Wind speeds range from 8 miles to 15 miles per hour throughout the year.

Form of Government

The government of Mississippi County consists of three County Commissioners: one presiding commissioner elected at-large for a four-year term who presides over regular weekly meetings, and two associate commissioners who are elected from each of their respective districts for a four-year term. Mississippi County operates as a third-class county and has authorization to administer county structures, infrastructure, and finances.

In addition, the county has developed and maintained a master plan, emergency operations plan, floodplain regulations, and storm-water regulations. Portions of these documents have been incorporated as mitigation actions in the 2010 Update Plan.

Community Partnerships

Mississippi County and its cities collaborate on issues relating to emergency services and infrastructure. The Mississippi County Ambulance District serves residents residing in and around Mississippi County, as well as the Mississippi County's Sheriff's Department. The Mississippi County Highway Department continues to maintain the 342 miles of county roads and 52 bridges within the county with cooperation from the Missouri Department of Transportation. In addition, the Mississippi County Highway Department has provided service to the several drainage districts in the county.

Demographic Information

The population of Mississippi County began a slow decline starting in the 1970's. The following chart shows the level of decline experienced by the area during the last four decades. The estimated population for 2008 shows a slight increase.

Year	Population
1970	16,647
1980	15,722
1990	14,442
2000	13,427
2008	13,504

Source: US Census Bureau-Quick Facts

Statistically, the median age of Mississippi County residents is 37 years and the median income is \$23,012. The average home in Mississippi County costs \$47,000 and is maintained on a family income of \$28,833. Of those residents 25 years of age or older, 37.8% have earned at least a high school degree or equivalent, and 7.2% have earned a bachelor's degree while living within Mississippi County.

Mississippi County is mainly Caucasian, 77.6% according to the 2008 estimated census, and is an economically distressed county within the Missouri Bootheel. Approximately 23.7% of the county residents are below the poverty level.

Of the 13,504 estimated residents in Mississippi County in 2000, approximately 10,563 were Caucasian, 2,790 were African-American and 88 were American Indian and/or Alaskan Native/Other. Of these residents, 53.3% are female, while the other 46.7% are male. According to the 2000 census, 53.4% or 7,023 are considered low-to-moderate income families.

Mississippi County Diversity	1990	2000
White	11,590	10,563
Black	2,804	2,776
American Indian	26	33
Asian/Pacific Islander	15	16
Other	7	39

Source: US Census

Mississippi County consists of 5,928 occupied housing units with 63.6% of its residents owning their homes while 36.4% rent their homes. Approximately 457 homes or 7.8% of these homes are vacant. The median household income is \$27,670 according to the 2008-estimated census. A majority of the households, 68.2%, are married couples occupying 47.7% of Mississippi County households. The concentrated location for

housing availability is within Charleston, county seat of Mississippi County, with over 1,957 housing units. The average size household is 2.41 persons.

Economy, Industry, and Employment

The following table shows Mississippi County's labor force and employment numbers for persons sixteen years old or older in 1990, 2000 and 2009. The labor force in the county has decreased by 1% over that period of time. Approximately 57.1% of the Mississippi County's total population is included in the county labor force. The unemployment rate in Mississippi County as of October 2009 was 8.9%.

Mississippi County Economic Indicators	1990	2000	2009
Civilian labor force	5,935	5,917	5,926
Employed	5,429	5,395	5,401
Unemployed	506	522	525

Source: US Census

Of the 5,926 employed individuals residing in the county, 5,125 commute to work with average travel time at approximately twenty minutes. The following chart shows in what field the largest percentage of Mississippi County residents work:

Industry	Annual Average	Industry	Annual Average
Goods Producing	332	Construction	50
Manufacturing	283	Service Providing	1992
Trade, Transportation Utilities	1052	Wholesale Trade	184
Retail Trade	469	Transportation & Warehousing	399
Information	6	Financial Activities	137

Finance	99	Insurance	19
Real Estate, Rental & Leasing	20	Professional & Business Service	37
Professional, Scientific & Tech	18	Education & Health Service	432
Leisure & Hospitality	222	Arts, Entertainment & Recreation	17
Accommodation & Food Service	205	Other Services	106
Government	1153	Federal Government	43
Postal Service	30		

Source: US Census

Primary Industries

The following are the major employers and the number of employees located within Mississippi County:

Major Employers	Employees	Product
Southeast Correctional Facility	439	State of Missouri Dept. of Corrections
Charleston School District	176	Public School District
Gates Rubber Company	150	Rubber Hoses
East Prairie School District	127	Public School District
Reeves Boomland	80	Tourist Services
Fitzgerald Marine	81	Barge Fleeting Services

Source: BRPC

Mississippi County Port Authority

The Mississippi County Port Authority was created in 1979 for the purpose of assisting and stimulating growth of river-oriented commerce and industry in the county. It is the farthest north ice-free port on the Mississippi River and is open year-round to navigation. Due to its close proximity to the Ohio, Tennessee, and Cumberland Rivers, it allows for easy access to a variety of raw materials and a cost-effective means of

delivering finished products. The port is located at mile marker 949 on the lower Mississippi River. With approval from the U.S. Army Corps of Engineers, the port has fleeting space available and can accommodate more than 1,000 barges. Harbor tug boats, marine repair facilities, 24-hour dispatch services with dry-bulk material loading and unloading facilities are available at the port. Dry docks, mid-stream fueling, and commissary services are available at nearby facilities.

Codes/Regulations

Mississippi County operates as a third-class county and has made efforts to enforce the codes and regulations set by the county. County zoning is administered through a set of regulations. A majority of the current classifications include agricultural, commercial and industrial, residential and planned residential. Mississippi County does have additional regulations which cover cell phone towers, solid waste, hazardous waste, floodplains, and storm water. Restrictions on hazardous waste storage, treatment, and disposal are based upon federal and state regulations.

Existing Community Plans

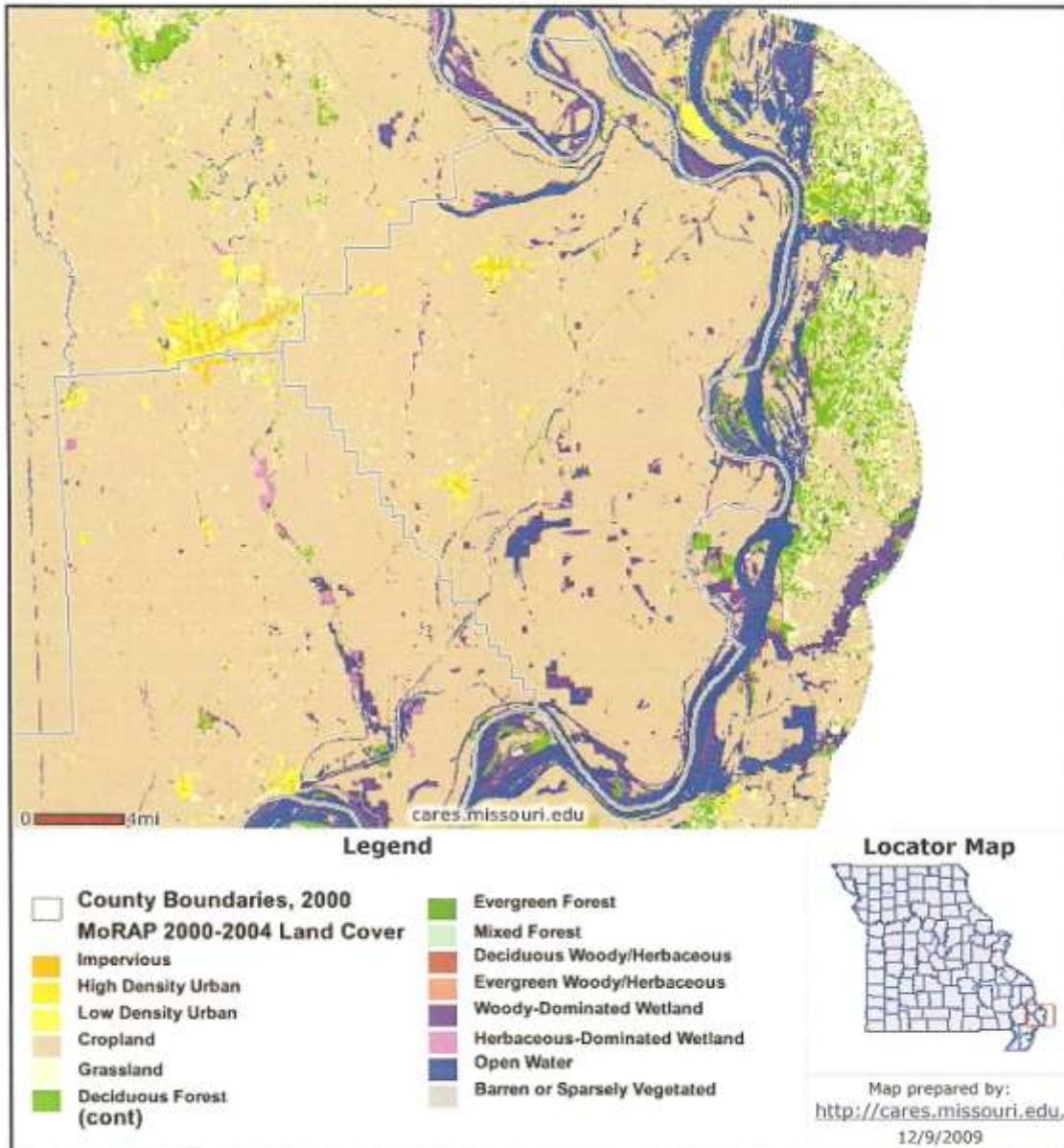
Mississippi County has a comprehensive master plan to provide development in and around the county and to enhance quality of life issues. Mississippi County also has an emergency operations plan (EOP) for the purpose of preventing or reducing the risk to people or their property within the county. Each incorporated town and village within Mississippi County uses the EOP. The plan contains information regarding emergency public information, public works, fire and rescue, and evacuation. It continues to be reviewed and revised as needed by the Mississippi County local emergency planning team. Elements of the above plans have been incorporated as mitigation actions in the 2010 Mississippi County Update Plan.

Land Use Information

A majority of Mississippi County is made up of agricultural land with low-density residential areas. Population trend comparisons from 1980 to 2000 shows the following for the communities of Mississippi County: Anniston (-14%), Bertrand (+.6%), Charleston (-.9%), East Prairie (-13%), Wilson City (-46.4%) and Wyatt (-14%). Expensive farmland and the unwillingness of landowners to sell for commercial or residential use, hinders further development. Interstate 55, 57 and highway 60 provide county residents with easy access to employment in surrounding counties. Future trends show continued decline in population and land development. The following chart and land cover map shows in greater detail the division of land within the county.

Land Cover Type	Acres	% Coverage
Row Crop	213,792	81.6
Open Water	21,104	9.2
Seasonally Flood Mixed Bottom Land Forest	8594	3.28
Pasture Land	4847	1.85
City/Town/Urban Buildup	10,664	4.07
Total	262,000	100%

Mississippi County Land Use Map



Development Trends and Annexation

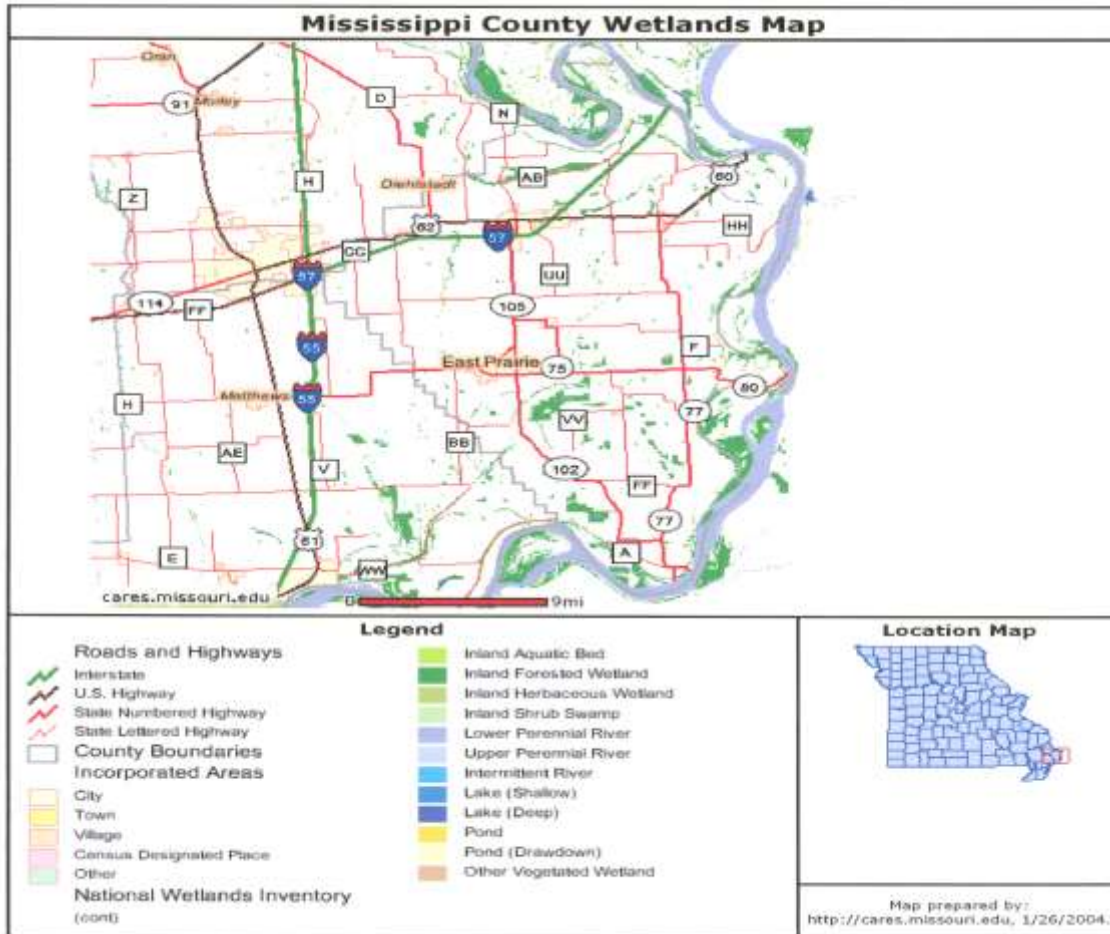
With the decrease in the county population, development trends have not changed much in the last decade. With the rural area of Mississippi County and the lack of substantial industries in the last few years, employment has slowed down as well as the economy in this area. Although interest rates have been low, new construction has not improved.

Floodplain Management

Floodplain regulations have been adopted within the county and in the individual cities of Anniston, Bertrand, Charleston, East Prairie, and Wyatt. Within these floodplains and zones, new construction, improvements and modular home placement is not allowed without extensive requirements.

Wetland Issues

According to the U.S. Fish and Wildlife Service, there are known refuges or minor wetlands that exist within the county. Of the eleven-wetland quads, open water and some smaller woody wetlands exist in small areas east of Mississippi County. The map below identifies the location of wetlands in Mississippi County.



National Flood Insurance Program (NFIP)

Listed in the chart below is a description of NFIP in Mississippi County. Participation in the NFIP is a basic requirement for funding under certain hazard mitigation grant programs. Those jurisdictions that participate in the program are listed as well as the actions or activities to maintain compliance with the NFIP or to improve the CRS scores.

National Flood Insurance Program-Compliance-Mississippi County					
Jurisdiction	Participate	Actions for Compliance			
		Adoption and enforcement of floodplain management requirements	Floodplain identification and mapping	Provide Flood Insurance	CRS activities
Mississippi Co.	Yes	Yes	Yes	Yes	Designated Floodplain Manager, drainage systems, coordinate county mitigation activities
Anniston	Yes	Yes	Yes	Yes	Stormwater regulations
Bertrand	Yes	Yes	Yes	Yes	Improved drainage
Charleston	Yes	Yes	Yes	Yes	Improved drainage
East Prairie	Yes	Yea	Yes	Yes	Stormwater regulations
Pinhook	Yes	Yes	Yes	Yes	
Wilson City	Yes	Yes	Yes	Yes	Stormwater regulations
Wyatt	Yes	Yes	Yes	Yes	Drainage

Environmental Concerns

There are potential environmental concerns regarding hazardous material accidents along the corridors of Interstate 55 and 57 as well as Highway 60 which make up the major transportation arteries in Mississippi County. Natural disasters could cause a release of hazardous materials at any of the gas stations or various commercial and industrial sites. No federal Superfund sites are located within the county.

Endangered Species, Historic Properties/Sites and Archaeological Sites

Endangered and threatened species within Mississippi County include Indian Bat (*Myotis Sodalis*); Bald Eagle; Least Tern (*Sterna Antillarum*); Pallid Sturgeon (*Scaphirhynchus Albus*); Fat Pocketbook (*Potamilus Capax*); and the Decurrent False Aster.

The Missouri Department of Natural Resources State Historic Preservation's Office has established four historical sites in Mississippi County. The Hearnese Site, established in 1973; the Missouri Pacific Depot located east of intersecting branches of the Missouri Pacific Railroad in Charleston established in 1972; the Moore House on 403 North Main in Charleston, established in 1980 and the Jacob Swank House, west of Charleston on US Hwy. 60 and 62, established in 1973.

One building of cultural importance was the Mississippi County Courthouse which was built in 1852 and destroyed by fire in 1891. It was rebuilt in 1900 and destroyed again in 1997. In addition, six places in Mississippi County are recorded as archaeological sites. They include the Beckwith Fort Site in Towosahgy State Park, Crosno Fortified Village Site, the Hess Archeological Site, the Hoecaks Village Archeological Site, the Mueller (Miller) Archeological Site, and the O'Bryan Ridge Archeological District, LaPlant Archeological Site, Barker Mounds Archeological Site and Belmont State Historic Marker.

Inventory of Critical, Key, Essential Facilities

Medical Facilities

The nearest hospital is located outside of Mississippi County. Missouri Delta Medical Center is located in Sikeston (Scott County). St. Francis Medical Center and Southeast Missouri Hospital are located twenty-five miles north in Cape Girardeau. There are two clinics operating within the county. The Missouri Delta Medical Center operates a clinic in cooperation with the Mississippi County Health Department and the Ferguson Medical Clinic of Sikeston. The Ferguson Clinic operates a satellite office in East Prairie. Air Medivac out of Cape Girardeau also provides its members who reside within the county with emergency medical air service.

The following physicians are available within Mississippi County:

-
- Nine MD's
 - Three Dentists
 - One Eye Doctor
 - Two Chiropractors

The Visiting Nurses Association of Southeast Missouri and Walker and Associates provide in-home health care to county residents.

Mississippi County is home to three nursing homes. They include Bertrand Retirement Home in Bertrand, Charleston Manor in Charleston, and East Prairie Nursing Center in East Prairie.

The Mississippi County Ambulance District is staffed with paramedics and EMT's twenty-four hours a day, seven days a week. The Ambulance District is located on Highway 105 between East Prairie and Charleston and serves the entire county of Mississippi.

Other support services include the Susanna Wesley Family Learning Center, the Missouri Baptist Children's Home, Domestic Violence Shelter, Sheltered Workshop, two RSVP Senior Citizen Nutrition Centers, DAEOC Family Service Office and the Mississippi County Rescue Squad.

Law Enforcement

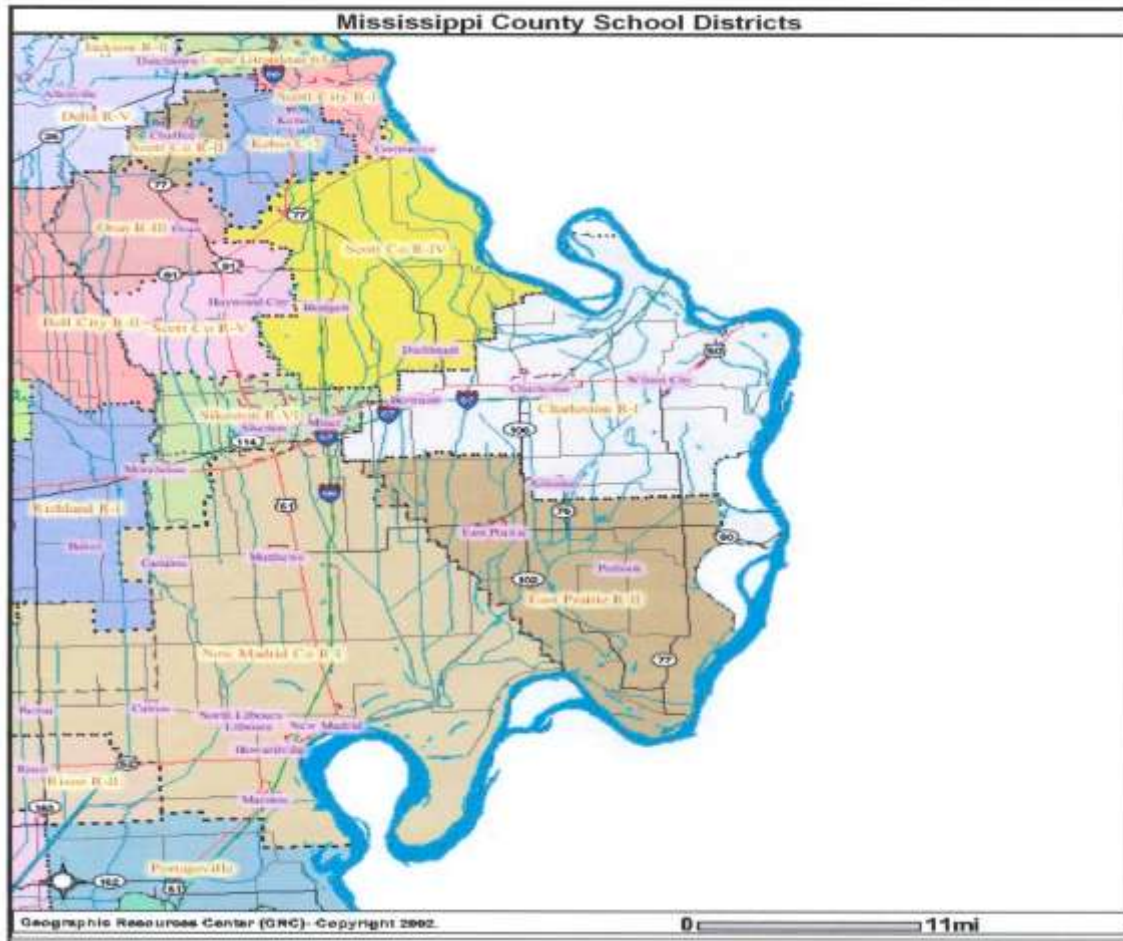
Local law enforcement is available within each community. The Mississippi County Sheriff's Department is the key facility. Housed in Charleston, the county sheriff's department has seven full-time deputies, five part-time deputies, and thirty reserves that reside throughout the county. Charleston and East Prairie provide their own police protection.

Fire Protection

The cities of Charleston and East Prairie have fully staffed fire stations with up-to-date equipment. The cities of Wyatt, Bertrand, and Anniston have volunteer fire departments. Mutual Aid agreements are also in place with neighboring communities in case of a major conflagration. Charleston and East Prairie provide fire protection services to the Rural Fire Protection District under annual contracts.

Educational Facilities

Mississippi County is comprised of two large school districts to serve the 2,250 school-age children. Charleston R-I School District serves the northern half of the county. The district has two elementary schools, one middle school, and one high school serving 1075 students.



Charleston R-I	Address	Grades	Enrollment	Staff
Warren E. Hearnese Elementary	East Commercial	K-5	517	51
Charleston Middle School	South Main Street	6-8	234	30
Charleston High	Thorn Street	9-12	324	32

Source: Mo. Dept. of Elementary and Sec. Ed.

Charleston R-I is an accredited district with a 95.1% attendance rate, a 4.3% drop out rate and a graduation rate of 85%.

East Prairie R-II School District serves the southern half of the county with two elementary schools, one junior high school, and one high school. Approximately 1175 school-age children attend this accredited school district.

East Prairie R-II	Address	Grades	Enrollment	Staff
R.A. Doyle Elementary	402 Washington	PK-2	385	31
A.J. Martin Elementary	510 Wilkinson	3-6	326	32
East Prairie Jr. High	210 E. Washington	7-8	160	21
East Prairie High	304 E. Walnut	9-12	304	31

Source: Mo. Dept of Elementary and Sec. Ed.

According to the 2009 school district report, East Prairie has a 95.1% attendance rate, a 4.3% drop out rate, and an 84% graduation rate.

Mississippi County has several small in-home day care facilities with five childcare centers and group homes with a capacity of 20-58 children. The cities of Wyatt and East Prairie have a Head Start Preschool Program which serves approximately 160 children.

Park and Recreation

The cities of Charleston and East Prairie have a full array of public parks, baseball diamonds, tennis courts, and swimming pools. There are thirteen public parks in the two communities, and East Prairie has recently finished construction of the fourteenth park, a twenty-five-acre Family Recreation Center. There are also three public fishing ponds in the two cities, two in Charleston and one in East Prairie. There is one private country club and golf course just east of the Charleston city limits.

In addition, there are numerous fishing holes in Mississippi County, plus five public access points to the Mississippi River where visitors enjoy fishing or motor boating. The Mississippi River Trail, a multi-state endeavor extending from New Orleans to Ste. Genevieve, Missouri, enters Missouri through the Dorena-Hickman Ferry, one of the few remaining ferries on the Mississippi.

The Missouri Department of Conservation has several conservation areas and lakes in the county, including the Robert DeLaney Lake one mile north of the city of Charleston, the Ten Mile Pond Conservation Area and Number Seven Island Conservation Area. The Conservation Commission also manages the Tom Bird Blue Hole, the Moore River Access Point, the 34 Corner Blue Hole and the Dorena Access Point.

The Missouri Department of Natural Resources manages Big Oak Tree State Park, a National Natural Landmark, and one of the last remaining virgin bottom land forest and cypress swamps in the nation. Walk the boardwalk through the swamp, spend the day fishing, or watch the sky for the more than 150 different species of birds known to exist there. Mississippi County's heritage is as rich as its soil. One can share in that heritage at Towosahgy State Historic Site, battle of Belmont State Historic Site, Historic Museum of Mississippi County, Governor Warren E. Hearnes Museum and the Mississippi County Historical Society Home and Museum. The map below shows the location of some of Mississippi County's natural landmarks.



Inventory of Emergency Infrastructure

Emergency Management

The Mississippi County Local Emergency Commission (LEPC) offers services in all types of disaster preparedness and offers assistance when natural disasters occur. From “spotting” during stormy weather to manning roadblocks in the rural area of the county when floodwaters are prevalent, the LEPC is perpetually engaged in activities to save lives, minimize injuries, protect property, preserve functioning civil government, and maintain economic activities essential to Mississippi County. The LEPC establishes guidelines for conducting efficient, effective, coordinated emergency operations involving the use of all resources belonging to or available to Mississippi County. Elements of the LEPC have been incorporated as mitigation items in the 2010 Plan Update

Water and Wastewater Facilities

Adequate domestic water is available in Anniston, Bertrand, Charleston, East Prairie, Wilson City, and Wyatt. Mississippi County Rural Water Districts provides treated water to county residents. The village of Pinhook and those in the unincorporated part of the county rely on private wells. Adequate wastewater facilities are available to residents of Mississippi County with the expectation of those who live in un-incorporated areas; those residents rely on private septic systems.

Electricity and Natural Gas

Ameren UE and SEMO Electric Coop provide electric services to county residents. Mississippi County is served by Atmos County Gas. Several private companies supply Fuel Oil and LP gas.

Telecommunication Services

The following is a list of communication services available to Mississippi County residents.

Telecommunication service providers

SBC

Long Distance Carriers

ATT

MCI

Sprint

Wireless Communications Company

SBC Wireless

Cingular Wireless

Sprint PCS

Verizon Wireless

Internet Service providers

SCB (ISDN and DS-1)

Charter Comm. (cable access)

Several dial-up providers

The Edge PC (Broadband)

Inventory of Key Industrial/Commercial Employment Facilities

Several major manufacturing plants, of both local and national companies are located in Mississippi County. The following chart shows the area's retail and commercial facilities with the number of individuals they employ.

Source: BRPC

Major Employers	Employees	Product
Southeast Correctional Facility	439	State of Missouri Dept. of Corrections
Charleston School District	176	Public School District
Gates Rubber Company	150	Rubber Hoses
East Prairie School District	127	Public School District
Reeves Boomland	80	Tourist Services
Fitzgerald Marine	81	Barge Fleeting Services

Inventory of Housing Structures

Mississippi County has 5,840 housing units with an average cost around \$47,000. Of these units, 3,422 are owner-occupied housing units, and 1,961 are renter-occupied housing units which total 5,383 occupied units. The vacancy rate for Mississippi County is approximately 7.8% or 457 total units.

Community Profiles

City/Town/Village Profiles

The following provides the characteristics involved within the Mississippi County's incorporated and unincorporated areas.

Anniston

Total Population	285
Classification	4 th Class city
Square miles	0.40
Total housing units	118
Median household income, 1999	22,232
Median gross rent	400
Median owner-occupied housing	value 23,500
Master plan	yes
Emergency Operations plan	yes
Zoning regulations	no
Building regulations	yes
Stormwater regulations	no
Floodplain regulations	yes

Water service	Anniston
Sewer service	Anniston
Electric service	Ameren
Gas service	Atmos
Fire service	Anniston
Ambulance service	Mississippi County

Bertrand

Total Population	740
Classification	4 th Class city
Square miles	0.66
Total housing units	351
Median household income, 1999	26,023
Median gross rent	363
Median owner-occupied housing value	55,200
Master plan	no
Emergency Operations plan	no
Zoning regulations	no
Building regulations	yes
Stormwater regulations	no
Floodplain regulation	no
Water service	Bertrand
Sewer service	Bertrand
Electric service	Ameren
Fire service	Bertrand
Ambulance service	Mississippi County

Charleston

Total Population	4,732
Classification	3 rd Class city
Square miles	4.7
Total housing units	1,834
Median household income, 1999	21,812
Median gross rent	308
Median owner-occupied housing value	47,200
Master plan	no
Emergency Operations plan	yes
Zoning regulations	yes
Building regulations	yes
Stormwater regulation	yes
Floodplain regulation	yes
Water service	Charleston
Sewer service	Charleston
Electric service	Ameren
Fire service	Charleston
Ambulance service	Mississippi County

East Prairie

Total Population	3,227
Classification	4 th Class city
Square miles	1.3
Total housing units	1,418
Median household income, 1999	19,825
Median gross rent	363
Median owner-occupied housing value	38,100

Master plan	yes
Emergency Operations plan	yes
Zoning regulations	yes
Building regulations	yes
Stormwater regulation	yes
Floodplain regulation	yes
Water service	East Prairie
Sewer service	East Prairie
Electric service	Ameren
Fire service	East Prairie
Ambulance service	Mississippi County

Pinhook Village

Total Population	48
Classification	Village
Square miles	1.6
Total housing units	21
Median household income, 1999	15,417
Median gross rent	0
Median owner-occupied housing value	55,000
Master plan	no
Emergency Operations plan	yes; county plan
Zoning regulations	no
Building regulations	no
Stormwater regulation	no
Floodplain regulations	no
Water service	private wells
Sewer service	septic tanks
Electric service	SEMO electric

Fire service	County Fire District
Ambulance service	Mississippi County

Wilson City

Total Population	165
Classification	Village
Square miles	0.08
Total housing units	84
Median household income, 1999	15,417
Median gross rent	229
Median owner-occupied housing value	11,900
Master plan	no
Emergency Operations plan	yes; county plan
Zoning regulations	no
Building regulations	no
Stormwater regulation	no
Floodplain regulation	no
Water service	Wilson City
Sewer service	Wilson City
Electric service	SEMO electric
Fire service	Mississippi Fire District
Ambulance service	Mississippi County

Wyatt

Total Population	364
Classification	4 th Class city
Square miles	1.1
Total housing units	185

Median household income, 1999	19,444
Median gross rent	288
Median owner-occupied housing value	40,800
Master plan	no
Emergency Operations plan	yes
Zoning regulations	yes
Building regulations	no
Stormwater regulation	no
Floodplain regulation	yes
Water service	Wyatt
Sewer service	Wyatt
Electric service	SEMO Electric
Fire service	Wyatt
Ambulance service	Mississippi County

Mississippi County

Total Population	13,427
Classification	3 rd Class county
Square miles	413.2
Total housing units	5,840
Median household income, 1999	23,012
Median gross rent	327
Median owner-occupied housing value	47,000
Master Plan	yes
Emergency Operation Plan	yes, county
Zoning regulations	yes
Building regulations	yes
Stormwater regulations	yes
Floodplain regulation	yes
Water service	Charleston

Sewer service	Charleston
Electric service	Ameren
Fire service	Charleston/Fire District
Ambulance service	Mississippi County

