

**SECTION 1****County Profiles****County History**

Scott County was the second county formed in Missouri's famed Southeast Lowland Region in 1821. The county court was organized at the house of Thomas Houts in February or March 1822, at which time the judges were Andrew Ramsey, Richard Mathew and Thomas Houts. In 1822, the county contained but two townships, Moreland and Tywappity. Scott County was named after Missouri's first congressman, John Scott. Benton, the present county seat, was named after Missouri's first Senator, Thomas Hart Benton.

Named for one of Missouri's first U.S. Senators, Thomas Hart Benton, the city of Benton, was laid out in 1822 and is where the first county seat was located. From 1864-1878, the county seat was located at the city of Commerce and then returned to the present location in the county courthouse in Benton. Commerce, in 1803, was known as Tywappity and was a trading post and river landing. The first Baptist church was formed in what is now Commerce, Missouri, in 1805. Commerce was also remembered as a booming river town during the Civil War era. The first steam-powered ferryboat was put into service between Commerce, Missouri, and Fayville, Illinois, in 1880. Commerce was also the location of slave sales as historian Edison Shrum chronicles in his History of Scott County, published in 1984. In old accounts of the incident from chronicles of the former Scott County Democrat Newspaper, it was reported that in 1862, a group of Yankees raided and set fire to the county courthouse in Benton with the intent of destroying all the papers, books, and anything of value. The grandson of Col. William Meters, founder of Benton, reportedly rode his horse bareback to Morley to get help from a small force of rebel soldiers camped there. With their assistance, the fires were quickly put out, but nearly everything was destroyed. County records also indicated that in 1864, because of the damage to the building and contents, it was decided to move the county

---

seat to Commerce. The present courthouse was constructed in Benton in 1913, and the county seat was returned to Benton at that time.

German immigrants settled New Hamburg, the third town in the county, in 1839. The first Catholic Church was also erected in New Hamburg in 1839. In 1872, a stone church building was erected, and the old church house was used as a parochial grade school. It is believed to be the oldest church house still in existence in the county. The city of Sikeston, the county's fourth and largest town was settled in 1800. Sikeston was laid out on the Cairo and Fulton railroad in 1860, by John Sikes.

The town of Kelso probably has the most name changes of any town in the county. According to post office records, the first postmaster of Spring Hill was Dr. Wilson Brown, who later was the Lt. Governor of the State of Missouri. In 1858, the name was changed to Pikeston, as there was two other Spring Hills located in the state. In 1860, Kelso became known locally as Vollmersville after then Postmaster Henry Vollmer. In 1868, a license was issued to Louis Dannenmueller at Dannenmuellersville. In 1874, the post office was reopened with Charles Messmer as postmaster under the present name of Kelso.

Diehlstadt was founded in 1838, and joined Morley and Blodgett as watermelon capitals. By the year 1900, Diehlstadt had a population of over 150, with a Baptist church, a sawmill and five stores. Railroads came to Scott County, to the city of Sikeston at the south end of the county, and to Ansell, Fornfelt, and Illmo, now Scott City.

The county, devastated by guerrilla raids during the Civil War, grew rapidly from the 1870's to the early 1900's as its dense forests were lumbered off, and numerous railroads were built. Towns founded in this period were Diehlstadt, Morley, Oran,

Perkins, Blodgett, Crowder, Vanduser, Illmo, Fornfelt, Chaffee, Ancell and Kelso. The Thebes Mississippi River Railroad Bridge at Illmo dates from 1905.

### **Geography and Climate**

Scott County is strategically located along Interstate 55 which runs north and south. Interstate 57 and U.S. Highway 60 runs east and west through the county. About 82 percent of the county is in the Mississippi River Delta. The confluence of the Mississippi and Ohio Rivers are located in the county or adjacent to it. These rivers are adjacent to the eastern border of Scott County. Of Scott County's 423 square miles, the majority of the land is used for agricultural purposes. Cotton, corn, wheat, soybeans, and vegetables are the major products grown.

Scott County's climate is classified as warm and humid. The summers are hot and humid; the winters are relatively mild with several hard freezes occurring in January and February. The average growing season exceeds two hundred days. The average annual temperature is about 57 degrees. Summer temperatures average 79 degrees, and the winter temperatures average 34 degrees. The average annual rainfall is fifty inches. Snow is usually light and generally does not remain on the ground for more than three days.

### **Form of Government**

The Scott County Commission is composed of three county commissioners; one presiding commissioner elected at-large for a four-year term and who presides over regular weekly meetings, and two associate commissioners who are elected from each of their respective districts for a four-year term. Scott County operates as a third-class county and is authorized to administer county structures, infrastructure, and finances. In addition, the county has developed and maintains a master plan, an emergency operations plan, zoning regulations, floodplain regulations, and stormwater regulations. Elements of

these documents were incorporated as mitigation actions in the 2010 Update Plan for Scott County.

**Community Partnerships**

Scott County and its jurisdictions collaborate on many issues including emergency services and police and fire protection. Scott County is home to five fire districts that serve the residents of the area. The New Hamburg/Benton/Commerce (NBC) Fire District serves these three communities and its surrounding rural area; the Oran Fire District serves its community and the surrounding rural area; the Scott County Rural Fire District serves only the immediate rural areas not served by any other district; the Scott/Mississippi County Fire District serves those rural areas along these two county borders and the Sikeston Fire District which serves mainly the Sikeston area. In addition, Scott County hosts four county public water supply districts throughout its borders. The county also hosts two ambulance districts, North Scott County and South Scott County, to meet the needs of this 423 square mile land area.

**Demographic Information**

The following chart shows the steady increase in the Scott County population since 1990. As is indicated in the chart below, the population has increased by approximately 1% and is projected to increase another 1% within the next five years.

<b>Year</b>	<b>Population</b>
1990	39,376
2000	40,422
2008	40,673
5-year projection	41,180

Source: Mo Dept. of Economic Development

According to the 2000 census, the median age of county residents is thirty-six years of age. The median income is \$31,352 while the average home in Scott County cost \$68,200 and is maintained on a family income of \$38,090. Of those residents twenty-five years of age or older, 42.8% have at least a high school degree or equivalent, and 7.3% have a bachelor’s degree or higher.

Scott County’s population, according to the 2000 census, is 88% white. The county is economically distressed and is federally designated as such with the Delta Regional Authority. In addition, approximately 12.3% of the county residents are below the poverty level.

Of the 40,422 residents in Scott County, approximately 35,773 are white, 4,349 are black, and 304 are American Indian and/or Alaskan native. Of these residents, 52.2% are female, while the other 47.8% are male. According to the 2000 census, 40.6% or 16,193 are considered low-to-moderate income families.

<b>Scott County Diversity</b>	<b>1990</b>	<b>2000</b>
White	35,666	35,442
Black	3,486	4,246
American Indian	102	113
Asian/Pacific	60	96
Other	196	160

Source: Mo. Dept of Economic Development

Scott County consists of 15,626 occupied housing units with 69.4% of county residents owning their homes, while 30.6% rent their homes. Approximately 1,325 homes or 7.8% of these homes are vacant. The average per capita income is \$15,620 according to the 2000 census. A majority of households are married couples with married couples occupying 54.6% of Scott County’s households. The concentrated location for housing for the county is within Sikeston with over 7,428 housing units. The average household size in Scott County is 2.6 persons.

**Economy, Employment, and Industry**

The following table shows Scott County’s labor force and employment numbers. As can be seen, the number of individuals working has increased greatly since 1990.

<b>Year</b>	<b>Labor Force</b>	<b>Employed</b>	<b>Unemployed</b>	<b>Unemployment Rate</b>
1990	18,180	16,912	1,268	7.0%
1997	20,581	19,416	1,165	5.7%
2000	20,526	19,585	941	4.6%
May 2009	19,624	18,017	1607	8.2%

Source: Mo. Department of Economic Development

Of Scott County residents, 19,585 are employed individuals residing in the county and commuting to work with an average travel time of approximately nineteen minutes; 45.28% travel under fifteen minutes; 33.81% travel fifteen to twenty-nine minutes; and 20.91% travel over thirty minutes to work. The following chart shows what fields the largest percentage of Scott County residents work in.

<b>Industry Field</b>	<b>Number of Employees</b>	<b>Average Annual Salary</b>
Services	3,362	\$19,760
Retail Trade	3,115	\$14,508
Government	2,548	\$24,804
Manufacturing	2,214	\$24,128

Source: US Census Data

Of these fields, the services sector is first in employment by occupation, while retail trade is second, and government employment rounds off the top three. In 2000, 17,936 or

2.79% of employed residents worked outside their county of residence. The chart below shows the type and number of businesses located in Scott County.

Businesses in Scott County			
Type of Industry	Industry Description	Number of Establishments	Number of Employees
Manufacturing	Food Mfg	76	2575
	Dairy Product Mfg	5	500-999
	Ice Cream & Frozen Dessert	1	500-999
Wholesale Trade		73	831
	Durable goods	48	500-999
	Vehicle & Parts	11	201
	Automobile	5	100-249
	Machinery Equip	20	100-249
	Farm & garden	12	100-249
	Non-durable goods	24	250-499
	Farm products raw materials	4	100-249
	Electronics	1	0-19
			1
Retail Trade		241	2528
	Motor Vehicle Parts	32	250-499
	Used car dealers	13	20-99
	Other vehicle dealers	2	20-29
	Motorcycle, boats, & other	21	20-29
	Motorcycle dealers	1	0-19
	Other motor vehicle dealers	1	0-19
	Automotive parts, tires, access	12	20-99
	Furniture, home furnishings	13	20-99
	Other home furnishings	11	20-99
	Electronics & appliance	12	20-99
	Other radio tv & electronics	18	20-99
	Building materials & garden equipment	46	250-499
	Home Centers	2	100-249
	Other building dealers	11	20-99
	Lawn & garden equipment	8	20-99
	Farm supply & garden centers	7	20-99
	Food & beverage stores	24	250-499
	Specialty food stores	3	20-99
	Health & personal care	9	100-249
	Gasoline stations	40	250-499
	Gasoline stations/convenience	27	100-249
	Other gasoline stations	13	100-249
	Clothing accessories stores	32	220
	Clothing/infants	22	0-19
	Sporting goods, hobbies, books	19	20-99
	General merchandise	12	500-999
	Other general merchandise	21	500-999
	Miscellaneous retailers	24	100-249
	Office supplies	9	49
Other miscellaneous retailers	12	20-99	
Nonstore retailers	5	100-249	

	Vending machine operators	2	20-99
	Direct selling establishments	2	20-99
Information		20	100-249
	Telecommunications	17	100-249
	Real estate & rental & leasing	88	100-249
	Consumer goods rental	11	20-99
Professional	Professional, scientific, tech	71	250-499
	Legal services	23	20-99
	Offices of lawyers	22	20-99
	Accounting, bookkeeping	28	205
	Architectural, engineering	6	20-99
	Management, consulting	3	20-99
	Other professional consulting	7	20-99
	Veterinary services	5	52
	Administrative, waste mgt	71	500-999
	Employment services	5	259-499
	Investigation & security	2	100-249
	Services to buildings	19	20-99
	Landscaping services	11	20-99
	Educational	4	0-19
Medical	Health care & social assistance	118	2593
	Ambulatory health services	55	500-999
	Office Physicians	16	142
	Office of Dentist	14	50
	Other health practitioners	15	151
	Offices of physical occupation, speech, audiologist	3	100-249
Hospitals		1	500-999
	Nursing & residential care	20	500-999
	Nursing care facilities	13	500-999
Social Assistance		42	500-999
	Family services	14	100-249
	Services for elderly	7	100-249
	Other individual services	6	20-99
	Community relief services	4	20-99
	Child daycare services	23	100-249
Entertainment	Arts & recreation	23	20-99
	Accommodation & food services	85	1270
	Traveler accommodation	8	100-249
	Food services & drinking ser	76	1000-2499
	Limited-service eating places	36	500-999
	Other services	74	425
Automotive	Repair and maintenance	88	162
	Automotive body	6	20-99
	Industrial equipment repair	7	20-99
	Personal & household repair	1	0-19
Personal Services	Repairs and maintenance	1	0-19
	Laundry services	21	145
	Dry cleaning	5	20-99
	Linen & uniform services	2	20-99

Source: City-Data.Com



---

In addition, Scott County is home to the Southeast Missouri Regional Port Authority. Located on the Mississippi River near Cape Girardeau at Scott City, Missouri, the Southeast Missouri Regional Port Authority (SEMO Port) is midway between St. Louis and Memphis, Tennessee. The 1,800-foot slack water harbor is located forty-eight miles upstream from Cairo, Illinois (Ohio River) and one hundred forty-seven downstream from St. Louis (Illinois River and Missouri River).

SEMO Port Railroad, Inc. (SE) is a common carrier switching railroad which serves the port and nearby industries. The railroad connects with the two major western rail systems, Union Pacific Railroad and the Burlington Northern Santa Fe Railway. The SE is a wholly owned subsidiary of SEMO Port.

The port also has ready access to all five modes of transportation: river, rail, highway, pipeline, and air. Interstate Highways 55, 57, and 24 are located nearby. Texas Eastern pipelines for petroleum products and natural gas are one mile away. Cape Girardeau Regional Airport is located four miles away and is directly accessible by highway.

Land is available for lease to port-related industries, terminals, and distribution facilities. Team tracks are available for rail-truck transfer of cargo. Several companies operate terminals and provide cargo transfer between barge, rail, and truck. All of this is beneficial to the county of Scott.

### **Codes/Regulations**

Scott County operates as a third-class county and has provided all efforts to enforce the codes and regulations set by the county. Although Scott County does not have a planning and zoning board, they do utilize building and floodplain regulations under their local emergency planning committee. The chairman of the committee operates an emergency operations plan for all of Scott County. A majority of the current classifications include agricultural, commercial and industrial, residential and planned residential. Restrictions

on hazardous waste storage, treatment, and disposal are based upon state and federal regulations.

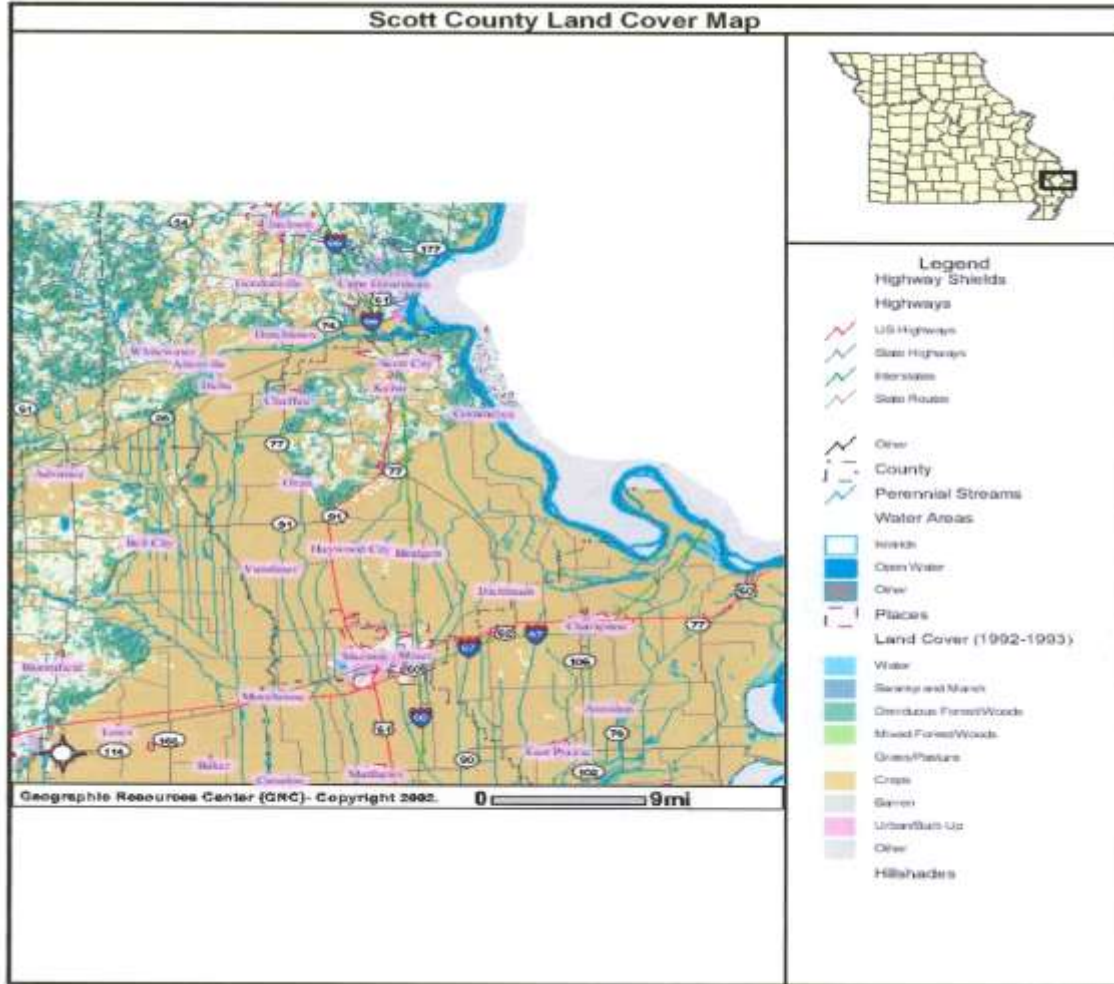
**Existing Community Plans**

Scott County also has an emergency operations plan for the purpose of preventing or reducing the risk to people or their property within the county. Even though the county does not have a county planning and zoning committee (P&Z), many of the other communities within Scott County, such as Sikeston, Scott City, and Chaffee do have a P&Z committee for their individual municipalities. In addition, a few of these communities have their own master community plan and stormwater regulations. Elements of these plans have been incorporated as mitigation actions in the 2010 Plan Update.

**Land Use Information**

A majority of the Scott County is made up of agricultural land with low-density residential area. The following land cover chart and map shows in greater detail the division of land within the county.

Land Cover	Acres	% Coverage
Row Crop	201,822	74.46
Pasture Land	25,230	9.31
Mixed Oak Forest, Old Fields, Fence Rows	9,205	3.34
Mix Hardwood Forest	7,217	2.63
Open Water	6,172	2.29
City/Town/Urban build up	21,354	7.88
Totals	271,000	100%



### Development Trends and Annexation

With the gradual increase in the population, development trends have been steady since the early 1990's. An increase in industry and economic development is seen throughout the area, even though the country's economy has suffered. New construction and other housing developments have spread throughout the cities and the surrounding rural areas near Scott City and Sikeston, since that is where the majority of employment is located.

---

## Floodplain Management

Floodplain regulations have been adopted within the county and in the communities of Sikeston, Miner, Scott City, and Chaffee. In addition, the fire departments of Morley, Blodgett, and Oran utilize their emergency operations plans with floodplain statutes in them. Within these floodplains and zones, new construction, improvements, and modular home placement are not allowed without extensive requirements.

## Wetland Issues

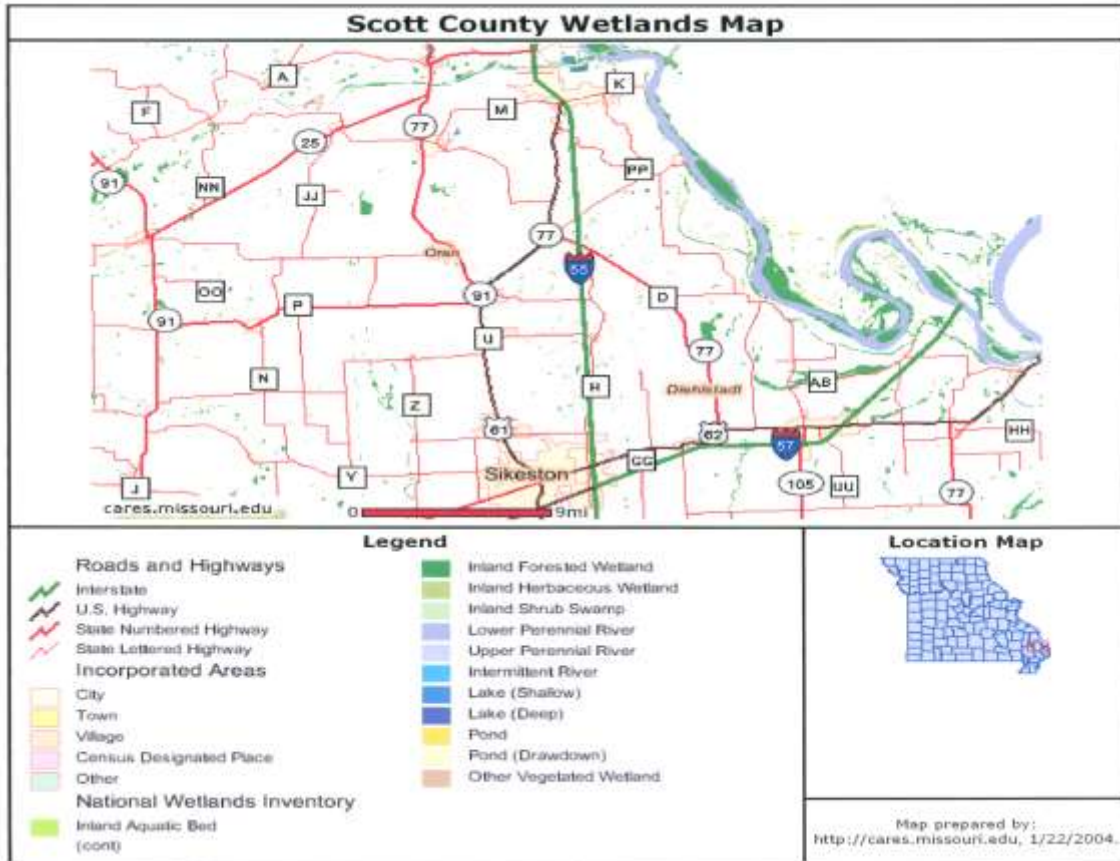
The topography of Scott County shows numerous small forest wetlands existing south of Scott City between Highway 61 and Interstate 55. Approximately 2.9% of Scott County's acreage is listed as wetlands.



Source: BRPC photo



Source: BRPC photo



**National Flood Insurance Program (NFIP)**

Listed in the chart below is a description of NFIP in Scott County. Participation in the NFIP is a basic requirement for funding under certain hazard mitigation grant programs. Those jurisdictions that participate in the program are listed as well as the actions or activities to maintain compliance with the NFIP or to improve their CRS score.

<b>National Flood Insurance Program-Compliance-Scott County</b>					
<b>Jurisdiction</b>	<b>Participate</b>	<b>Actions for Compliance</b>			
		Adoption and enforcement of floodplain management requirements	Floodplain identification and mapping	Provide Flood Insurance	CRS activities
Scott County	Yes	Yes	Yes	Yes	Designated Floodplain Manager, drainage systems, coordinate county mitigation activities
Sikeston	Yes	Yes	Yes	Yes	Stormwater regulations
Miner	Yes	Yes	Yes	Yes	Improved drainage
Oran	No	No	No	No	No
Commerce	Yes	Yes	Yes	Yes	
Diehlstadt	Yes	Yes	Yes	Yes	
Vanduser	Yes	Yes	Yes	Yes	
Haywood City	Yes	Yes	Yes	Yes	
Blodgett	Yes	Yes	Yes	Yes	
Chaffee	Yes	Yes	Yes	Yes	Flood Plain Regulations
Scott City	Yes	Yes	Yes	Yes	Drainage, Storm water Regulations
Kelso	Not listed on FEMA Community Status Book Report-Missouri				
Benton	Yes				Stormwater regulations
Morley	Yes	Yes	Yes	Yes	Stormwater regulations

---

## **Environmental Concerns**

There are potential environmental concerns regarding waste tires and petroleum tanks throughout Vanduser, Chaffee, Scott City, Miner, and Kelso; on the other hand, these communities and Sikeston have hazardous waste generators and transporters and licensed pesticide applicators which lessens environmental concerns. All of these items are mostly located adjacent to main highways or railroads through the community. The Bootheel Regional Planning Commission coordinates the Solid Waste program in the county. Tire pick-ups and recycling measures help remove tons of waste from local landfills.

## **Endangered Species, Historic Properties/Sites, and Archaeological Sites**

Scott County is home to only one endangered species: the Bald Eagle.

The Missouri Department of Natural Resources State Historic Preservation Office has designated the following structures and sites as historic properties or archaeological sites.

- The Marshall Hotel in Sikeston on March 22, 1984.
- The Sikeston, St. Louis, Iron Mountain and Southern Railroad Depot in Sikeston on December 28, 2000.
- The E.L. Brown Village and Mound Archaeological Site on February 12, 1971.
- Sandy Woods Settlement Archaeological Site on March 4, 1971.

## **Inventory of Critical, Key, Essential Facilities**

### **Medical Facilities**

The Missouri Delta Medical Center is located in Sikeston and employs over 640 individuals. Scott County is also home to several physicians, dentists, counselors, and medical specialists. Of the thirteen communities included in Scott County, only the

communities of Chaffee, Scott City, and Sikeston have available medical and/or dental clinics for their residents and residents in the rural areas. Air Medivac out of Cape Girardeau also serves its members who reside within the county.

The Visiting Nurses Association of Southeast Missouri and Walker and Associates provide in-home health care to county residents. Scott County is home to several nursing homes. They include Miner Nursing Home, Chaffee Nursing Center, Bertrand/Sikeston Retirement Home, Clearview Nursing and Rehabilitation Center, Colonial Manor, Green Meadows Retirement Home, Hunter Acres Caring Center, La Bonne Maison, Sikeston Convalescent Center and the Sikeston Health Care, Inc.

Scott County has two ambulance districts staffed with paramedics and EMT's twenty-four hours a day, seven days a week. The North Scott County Ambulance District serves those in northern Scott County; whereas, the South Scott County Ambulance District serves southern Scott County.

Other support services include Oran Senior Center, Chaffee Senior Center, Illmo Senior Center, House of Refuge for Abused Women and Children, YMCA, DAEOC Homeless Shelter, Mission Missouri Soup Kitchen, United Way of Sikeston, and the Southeast Missouri Community Partnership.

### **Law Enforcement**

Law enforcement officials are located in each of Scott County's thirteen communities. Scott County Sheriff's Department is located in Benton. The Sheriff's Department has an active staff of twenty-two, while the Scott County Detention Center has a staff of twenty-four, which includes community volunteers. Scott County utilizes programs such as D.A.R.E. for their countywide fifth graders and has a Reserve Deputy Unit. This Reserve Deputy Unit consists of a maximum of twenty private citizens who have received the minimum 120-hour training and 48-hour continuing education training. Members of this



unit assist the sheriff when extra manpower is needed during searches, manhunts, transportation of prisoners, and special events security.

### **Fire Protection**

Scott County has five fire districts that serve the 423 square miles of this region. The New Hamburg/Benton/Commerce (NBC) Fire District serves these three communities and their surrounding rural area. The Oran Fire District serves its community and the surrounding rural area; the Scott County Rural Fire District serves only the immediate rural areas not served by any other district. The Scott-Mississippi County Fire District serves those rural areas along these two county borders, and the Sikeston Fire District serves mainly the Sikeston area. In addition, Sikeston has a fire training facility to serve the firefighters and emergency personnel in Scott County. Several of the communities have their own municipal volunteer fire teams or rescue squads for incidents within their city limits.

### **Education**

There are seven public school districts educating the children of the county. Of these school districts, over 6,958 children attend from the Scott County area. There are a total of eleven elementary schools, four Jr. high/middle schools, and seven high schools, including one career and technology center. The following are the school districts within the county:

Scott County Central is located north of Sikeston and serves the rural area of the county. As an accredited school, Scott Central has 363 students with fifty-three staff members. Of these students, Scott County Central has a 95% attendance rate, a 4.2% dropout rate and a 96.2% graduation rate.

<b>Scott County Central</b>	<b>Address</b>	<b>Grades</b>	<b>Enrollment</b>	<b>Staff</b>
Scott County Central Elementa	20794 U.S. Hwy 61, Sikeston	K-6	191	29
Scott County Central High	20794 U.S. Hwy 61, Sikeston	7-12	172	24

Source: Mo. Dept of Education

Sikeston R-VI is an accredited school serving students within Sikeston and the smaller southern communities of Morehouse and Matthews. Sikeston R-VI has a total of six elementary schools, one middle school, one junior high school, and one high school, including a career and technology center, for their 3,606 Sikeston students. Sikeston R-VI School District has a 94.0% attendance rate, a 1.4% dropout rate, and a 96.5% graduation rate.

<b>Sikeston R-VI</b>	<b>Address</b>	<b>Grades</b>	<b>Enrollment</b>	<b>Staff</b>
Southeast Elementary	Ables Road, Sikeston	1-4	296	33
Morehouse Elementary	Beech Street Sikeston	K-4	167	27
Matthews Elem.	Elm St., Sikeston	1-4	308	34
Lee Hunter Elementary	Baker Lane, Sikeston	1-4	357	37
Sikeston Kindergarten Cnt.	East Salcedo Rd. Sikeston	K	325	36
Sikeston Middle School	510 Lindenwood, Sikeston	7-8	555	59
Sikeston Jr. High	100 Twitty Drive, Sikeston	5-6	527	54
Sikeston Sr. High	200 Pine Street, Sikeston	9-12	1071	85
Sikeston Career & Technology Center	200 Pine Street, Sikeston	10-12	0	23

Source: MO. Dept of Education

Oran R-III is also an accredited school with 366 students with an attendance rate of 96.0%, a 7% dropout rate, and a 97% graduation rate.

Oran R-III	Address	Grades	Enrollment	Staff
Oran Elementary	310 Church Street,	K-6	172	19
Oran High School	310 Church Street	7-12	194	22

Source: Mo Dept. of Education

Chaffee R-II is an accredited school with 558 students, an attendance rate of 96.0%, a dropout rate of 3%, and 95.6% graduation rate.

Chaffee R-II	Address	Grades	Enrollment	Staff
Chaffee Elementary	408 Elliot	K-6	283	24
Chaffee Jr/Sr High	517 Yoakum Ave.	7-12	275	23

Source: Mo Dept. of Education

Scott City R-I School District is home to three schools, including one elementary, one middle school, and one high school for their 985 students. The district has a graduation rate of 94.0%, an attendance rate of 93.0% and a dropout rate of 1.50%..

Scott City R-I	Address	Grades	Enrollment	Staff
Scott City Elementary	3000 Main Street	K-4	332	32
Scott City Middle	3000 Main Street	5-8	308	38
Scott City High	3000 Main Street	9-12	345	37

Source: Mo Dept. of Education

Kelso C-7 is home to one elementary school (K-8) which has approximately 104 students and with an attendance rate of 97.6%. When these students graduate from Kelso Elementary, they then have the option of attending several high schools in the areas.

<b>Kelso C-7</b>	<b>Address</b>	<b>Grades</b>	<b>Enrollment</b>	<b>Staff</b>
Kelso Elementary	1016 State Hwy. A	K-8	104	18

Source: Mo Dept. of Education

Benton is home to the Scott County R-IV(Kelly) School District, which is attended by 975 students. Scott County R-IV has one elementary, one middle school, and one high school with a 94% attendance rate, a 4.2% dropout rate, and an 83.9% graduation rate.

<b>Scott County R-IV</b>	<b>Address</b>	<b>Grades</b>	<b>Enrollment</b>	<b>Staff</b>
Scott County Elementary	4035 St. Hwy 77 Benton	K-5	438	38
Scott County Middle School	4035 St. Hwy 77 Benton	6-8	222	27
Thomas Kelly High	4035 St. Hwy 77	9-12	315	30

Source: Mo Dept. of Education

Scott County has approximately seventeen daycare facilities, five preschool programs, and two head start facilities available for approximately 2,828 children under the age of five years. In addition, the Sikeston Middle School is home to the YMCA of Southeast Missouri for after school programs.

The following map shows the school districts location in Scott County as well as the Sikeston location of Southeast Missouri State University.

Source: Southeast Mo. State Un. Website

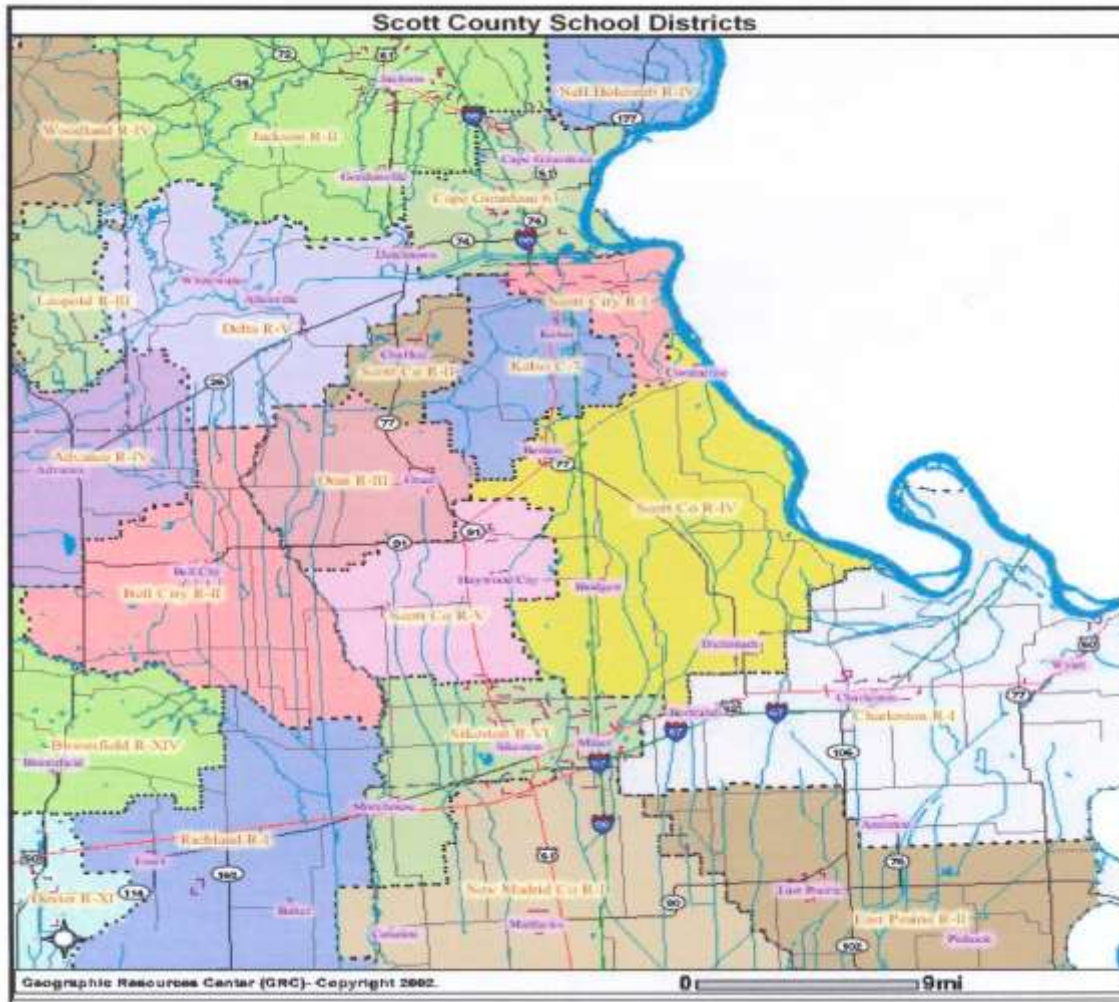


Semo-Sikeston is located at 2401 North Main. Approximately 850 students attend the center on a semester basis. Various four-year degrees can be obtained at the Sikeston Center as well as transfer courses for other degrees offered at the main campus in Cape Girardeau. Courses are taught by visiting and adjunct professors.



The Sikeston facility is located at 103 Kathleen Street in Sikeston, Mo. Approximately 300-350 students attend the Sikeston facility per semester. 80 plus courses are offered which can lead to an Associate of Arts or Applied Science degree through TRCC. Courses are taught by adjunct professors. The Center has recently been donated 40 acres of land that will bring about the construction of a new and larger facility.

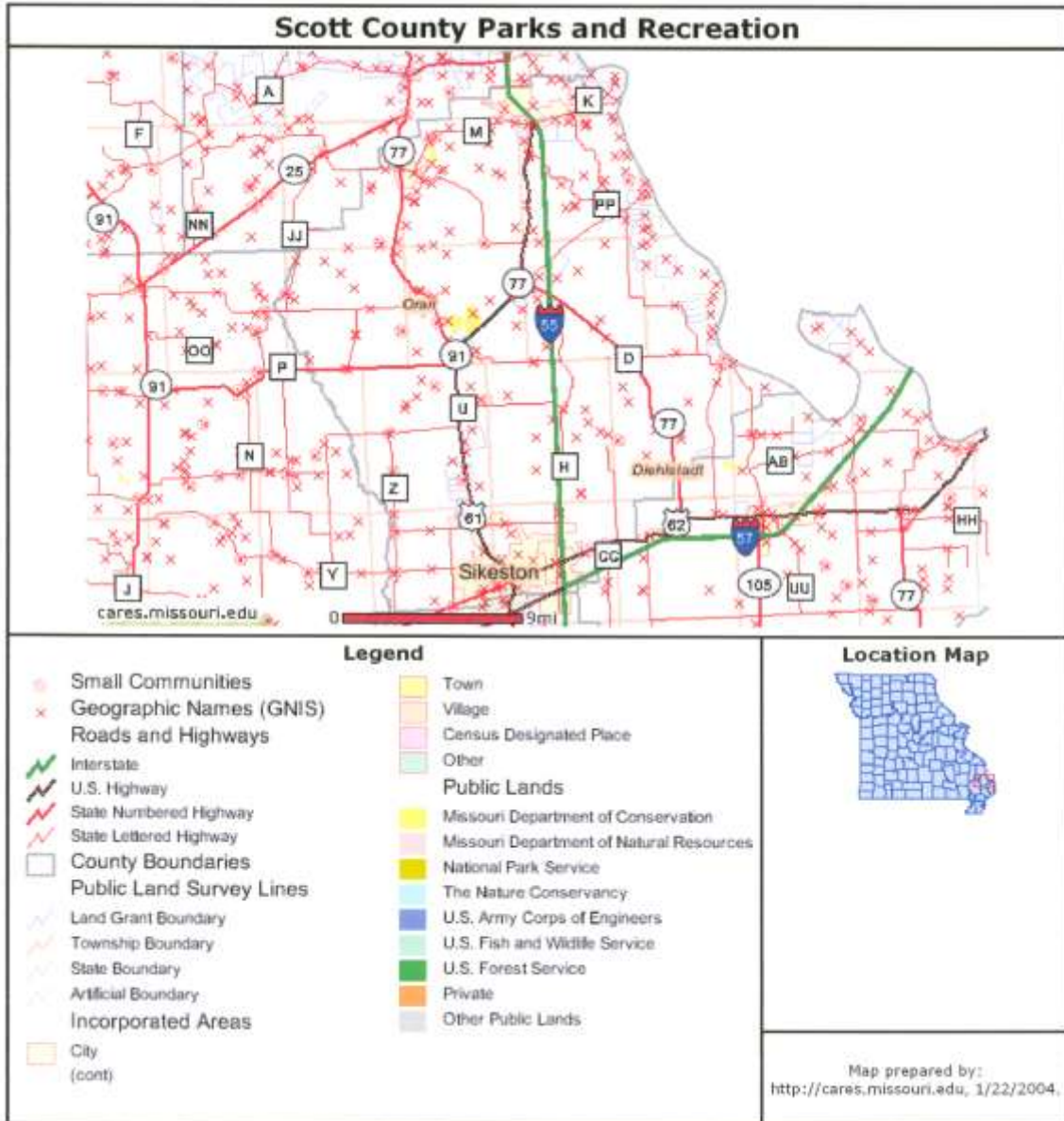
Source: Three Rivers Community College website



**Parks and Recreation**

Scott County has many recreational opportunities and activities for its residents and outside visitors. The county contains seventeen parks that include playground equipment, picnic shelters and benches, and ball fields. The largest park system is the Sikeston Recreational Complex featuring a fishing lake, tennis courts, and several soccer fields, baseball diamonds and a little league football team. In addition, there is an RV and Camping Park located in Commerce, with a view of the Mississippi River.

Scott County also has activities for all age groups which includes four racetracks between Sikeston and Benton and two golf courses. The Sikeston Country Club is a par 71 course covering 6,019 yards, while the Bootheel Golf Course is a par 72 course covering 6,649 yards. The map below shows some of the park's locations.



Southeast Missouri is known for its festivals celebrating the history and future of the area. Of these festivals, Scott County hosts the Cotton Carnival in Sikeston, the Floodfest in Commerce, and the nationally known Sikeston Jaycee Bootheel Rodeo.

In addition, Scott County has its own winery in Commerce called the River Ridge Winery where many delicious wines are homegrown and bottled to perfection. Also, Benton has the Beggs Pumpkin Patch where families come from miles around to visit this homegrown pumpkin farm, which has hayrides, arts and crafts, homemade desserts and snacks, mazes, farm displays and other attractions. Schools concentrate their fall field trips to this area due to the variety of activities and things to see in Scott County.

## **Inventory of Infrastructure**

### **Emergency Management**

Scott County has an emergency management committee that offers services in all types of disaster preparedness and assistance when natural disasters occur. From storm spotting during inclement weather to manning roadblocks in the rural area of the county when floodwaters are prevalent, the emergency management commission and the Scott County Sheriff's Department is available to do what is necessary to save lives, minimize injuries, protect property, preserve functioning civil government, and maintain economic activities essential to Scott County's survival. Most of the communities in Scott County have their own emergency management plans through their local police or fire department. The current emergency management plan establishes the guidelines for conducting efficient, effective, coordinated emergency operations involving the use of all resources within Scott County and its communities.



**Water and Wastewater Facilities**

Most of the thirteen communities within Scott County operate their own water and wastewater facilities. In addition, the county has four public water supply districts to assist those in the rural areas of the county. Wastewater facilities are also maintained by each individual community. Residents within the villages have their own septic tanks to handle their own wastewater.

**Electricity and Natural Gas**

Ameren UE is the main distributor of electricity within Scott County except for the Sikeston community which has its own 235-megawatt coal-fired generating power plant. Sikeston also has a standby generation agreement in place to meet the needs of any individual consumer of electricity in their system. SEMO Electric Coop provides electric power to portions of Scott County. ATMOS Gas Company mainly provides natural gas service within the county.

**Telecommunication services**

Southwestern Bell and Big River Telephone Company offer fiber Optic Loop/DSL. Other communication services that are available to Scott County residents are listed below:

Wireless Communications Company

SBC Wireless

Verizon Wireless

Cingular Wireless

Sprint PCS

Long Distance Carriers

ATT

Internet Service Providers

SCB

MCI

Several dial-up providers

Sprint

**Inventory of Key Industrial/Commercial Employment Facilities**

Several major manufacturing plants of both local and national companies are located in Scott County. The following list includes the area’s major retail and commercial facilities and the number of individuals they employ.

Major Employers	Employees	Business
Good Humor Breyers	700	Manufacturer
Wal-Mart	485	Service
Missouri Delta Medical Center	640	Service
Havoc Wood	370	Manufacturer
Sikeston School District	300	Public School
Delta Express	200	Service
Scott County School District	200	Public School
Essex Group	190	Manufacturer
First National Bank	187	Financial Institution/Service
Blair Industries	170	Manufacturer
Community Shelter Workshop	150	Manufacturer
Missouri Department of Transportation	141	Service

Source: Bootheel Regional Planning Commission



Formed in 1975, Semo Port Authority contains an 1800 ft all season slack water harbor. The Port Authority provides its own rail system as well as adjacent rail lines. Inbound cargo consists of dry fertilizers, sulfate, liquid fertilizers, and ammonium nitrate. Outbound cargo consists of corn, beans, sand, mulch, and wheat. Approximately 100 workers are employed at the facility.

Southeast Missouri Regional Port Authority

Source: Semo Port Authority website

**Inventory of Housing Structures**

Scott County has 16,951 housing units with the average cost around \$68,200. Of these units, 10,842 are owner-occupied housing units and 4,784 are renter-occupied housing units, totaling 15,626 occupied units. The vacancy rate for Scott County is approximately 7.8% or 1,325 total units.

**Community Profiles**

**City/Town/Village Profiles**

The following are characteristics of incorporated and unincorporated areas in Scott County:

**Sikeston**

Total Population	16,992
Classification	3 <sup>rd</sup> class city
Square miles	17.9
Total housing units	7,428
Median household income, 1999	28,589
Median gross rent	409
Median owner-occupied housing	value 75,100
Master plan	yes
Emergency Operations plan	yes
Zoning regulations	yes
Building regulations	yes
Storm water regulations	yes
Floodplain regulations	yes
Water service	Sikeston

Sewer service	Sikeston
Electric service	Sikeston
Fire service	Sikeston
Ambulance service	South Scott County Ambulance District & Sikeston

**Miner**

Total Population	1,056
Classification	4 <sup>th</sup> class city
Square Miles	4.1
Total housing units	442
Median household income 1999	30,750
Median gross rent	359
Median owner-occupied housing value	64,600
Master Plan	yes
Emergency Operations Plan	yes
Zoning Regulations	yes
Building Regulations	yes
Storm water Regulations	yes
Floodplain Regulations	yes
Water Service	City
Sewer Service	City
Electric Service	Ameren
Fire Protection	City; volunteer department
Ambulance Service	South Scott County Ambulance District

**Oran**

Total Population	1,264
Classification	4 <sup>th</sup> class city
Square miles	1.1
Total housing units	544
Median household income, 1999	28,750
Median gross rent	382
Median owner-occupied housing value	48,500
Master Plan	no
Emergency Operations Plan	yes
Zoning Regulations	yes
Building Regulations	yes
Storm water Regulations	no
Floodplain Regulations	yes
Water Service	City
Sewer Service	City
Electric Service	Ameren
Fire Protection	Oran Fire District
Ambulance Service	North Scott County Ambulance District

**Commerce**

Total Population	110
Classification	Village
Square miles	0.32
Total housing units	42
Median household income, 1999	36,667
Median gross rent	325
Median owner-occupied housing value	47,500

Master Plan	no
Emergency Operations Plan	no
Zoning Regulations	no
Building Regulations	no
Storm water Regulations	no
Floodplain Regulations	yes
Water Service	village
Sewer Service	septic tanks
Electric Service	Ameren
Fire protection	NBC Fire District
Ambulance Service	North Scott County Ambulance District

**Diehlstadt**

Total Population	163
Classification	Village
Square miles	0.08
Total housing units	61
Median household income, 1999	24,375
Median gross rent	388
Median owner-occupied housing value	29,600
Master Plan	no
Emergency Operations Plan	no
Zoning Regulations	no
Building Regulations	no
Storm water Regulations	no
Floodplain Regulations	no
Water Service	village
Sewer Service	village/some septic tanks
Electric Service	Ampere

Fire Protection	Scott/Mississippi County Fire District
Ambulance Service	South Scott County Ambulance District

**Vanduser**

Total Population	217
Classification	Village
Square miles	0.13
Total housing units	84
Median household income, 1999	25,417
Median gross rent	344
Median owner-occupied housing value	27,500
Master plan	no
Emergency Operation Plan	no
Zoning Regulations	no
Building Regulations	no
Storm water Regulations	no
Floodplain Regulations	Yes
Water Service	village
Sewer Service	village/some septic tanks
Electric Service	Ameren
Fire Protection	Scott County Rural Department
Ambulance Service	South Scott County Ambulance District

**Haywood City**

Total Population	239
Classification	Village
Square miles	1.117 square miles
Total housing units	81

---

Median housing income, 1999	14,000
Median gross rent	313
Median owner-occupied housing value	28,400
Master Plan	no
Emergency Operations Plan	no
Zoning Regulations	yes
Building Regulations	yes
Storm water Regulations	yes
Floodplain Regulations	no
Water Service	Village
Sewer Service	Village/some septic tanks
Electric Service	Ameren
Fire Protection	Scott County Rural District
Ambulance Service	South Scott County Ambulance District

**Blodgett**

Total Population	265
Classification	Village
Square miles	0.13
Total housing units	98
Median housing income, 1999	33,194
Median gross rent	508
Median owner-occupied housing value	28,200
Master plan	no
Emergency Operation Plan	yes
Zoning Regulations	no
Building Regulations	no
Storm water Regulations	no
Floodplain Regulations	no



Water Service	village
Sewer Service	individual septic tanks
Electric Service	Ameren
Fire Protection	Scott County Rural Fire District
Ambulance Service	North Scott County Ambulance District

**Chaffee**

Total Population	3,044
Classification	3 <sup>rd</sup> class city
Square miles	1.8
Total housing units	1,378
Median housing income, 1999	27,076
Median gross rent	297
Median owner-occupied housing value	50,400
Master Plan	yes
Emergency Operations Plan	yes
Zoning Regulations	yes
Building Regulations	yes
Storm water Regulations	no
Floodplain Regulations	yes
Water Service	city
Sewer Service	city
Electric Service	Ameren
Fire Protection	Chaffee Volunteer Fire Department
Ambulance Service	North Scott County Ambulance District

**Scott City**

Total Population	4,591
Classification	3 <sup>rd</sup> class city
Square miles	4.6
Total housing units	1,953
Median housing income, 1999	31,958
Median gross rent	399
Median owner-occupied housing value	64,200
Master Plan	no
Emergency Operations Plan	yes
Zoning Regulations	yes
Building Regulations	yes
Storm water Regulations	yes
Floodplain Regulations	yes
Water Service	city
Sewer Service	city
Electric Service	Ameren
Fire Protection	Scott City Fire Department
Ambulance Service	North Scott County Ambulance District

**Kelso**

Total Population	527
Classification	Village
Square miles	0.32
Total housing units	226
Median housing income, 1999	45,294
Median gross rent	385
Median owner-occupied housing value	92,900

Master Plan	no
Emergency Operation plan	no
Zoning Regulations	yes
Building Regulations	yes
Storm water Regulations	yes
Floodplain Regulations	no
Water Service	village
Sewer Service	septic tanks
Electric Service	Ameren
Fire Protection	Scott County Rural Department
Ambulance Service	North Scott County Ambulance District

**Benton**

Total Population	732
Classification	4 <sup>th</sup> class city
Square miles	0.41
Total housing units	301
Median household income, 1999	33,365
Median gross rent	466
Median owner-occupied housing value	71,700
Master Plan	no
Emergency Operations Plan	yes
Zoning Regulations	yes
Building Regulations	yes
Storm water Regulations	yes
Floodplain Regulations	yes
Water Service	City
Sewer Service	City

Electric Service	Ameren
Fire Protection	NBC Fire District and City Volunteer Department
Ambulance Service	North Scott County Ambulance District

**Morley**

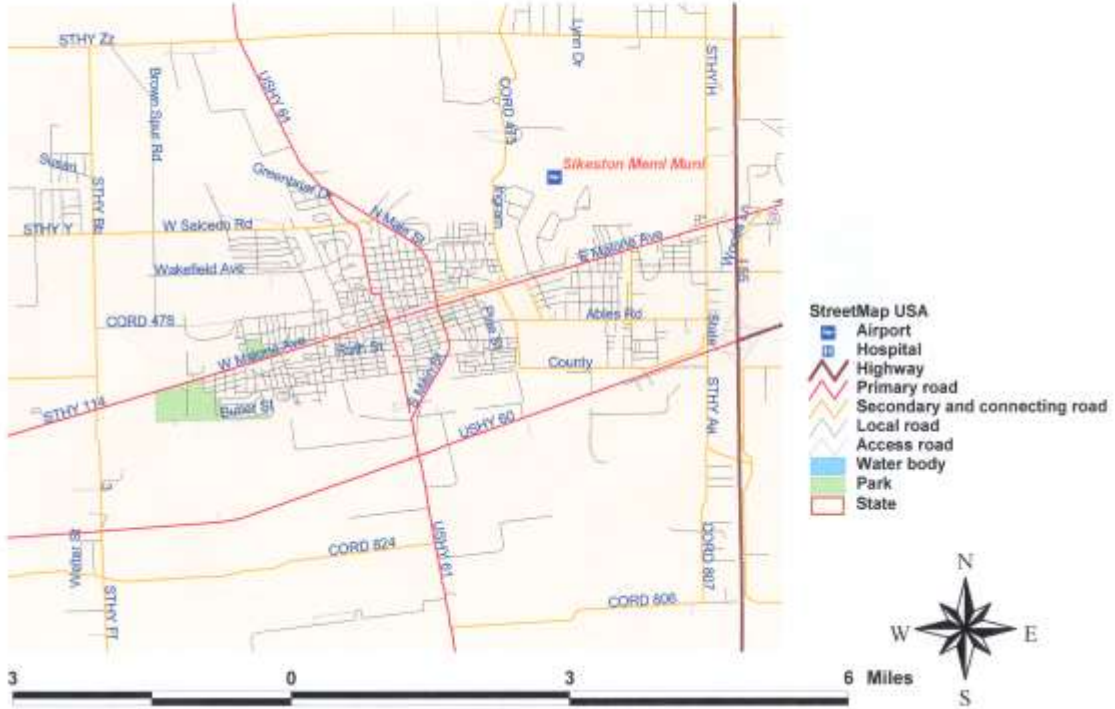
Total Population	792
Classification	4 <sup>th</sup> class city
Square miles	0.74
Total housing units	340
Median household income, 1999	26,696
Median gross rent	365
Median owner-occupied housing value	41,500
Master Plan	no
Emergency Operations Plan	yes
Zoning Regulations	yes
Building Regulations	yes
Storm water Regulations	no
Floodplain Regulations	no
Water Service	city
Sewer Service	city
Electric Service	Ameren
Fire Protection	Morley Volunteer Rescue Squad
Ambulance Service	North Scott County Ambulance District

**Scott County**

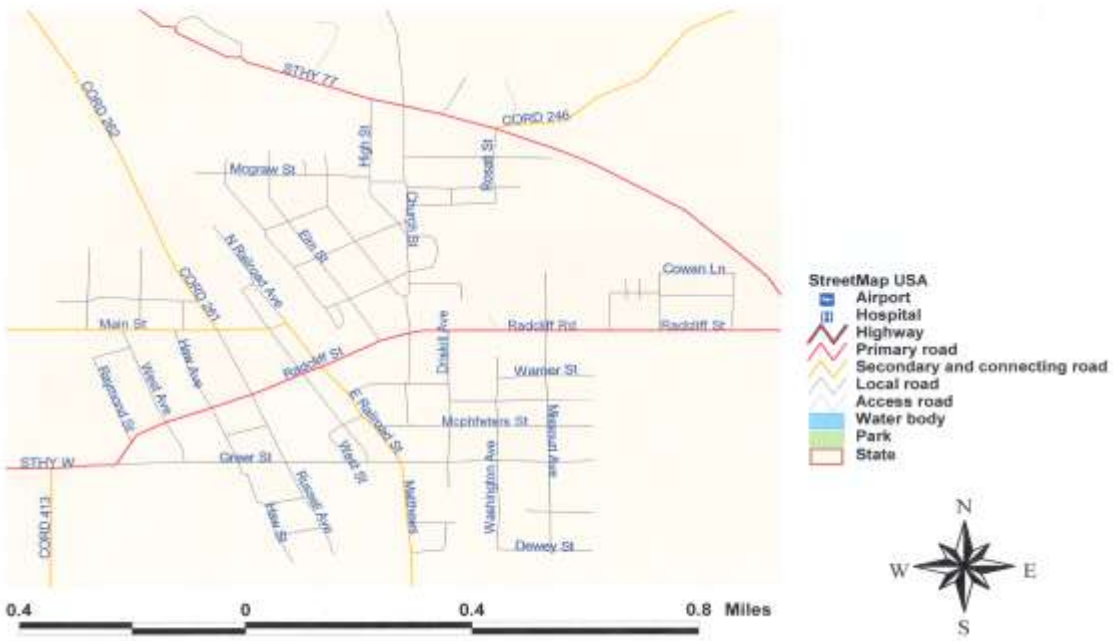
Total Population	40,422
Square miles	421 sq. miles of land; 5.0 sq. miles of water

Total housing units	16,951
Median household income, 1999	31,352
Median gross rent	393
Median owner-occupied housing value	68,200
Master Plan	no
Emergency Operations Plan	yes
Zoning Regulations	yes
Building Regulations	yes
Storm water Regulations	no
Floodplain Regulations	yes
Water Service	Scott County Public Water Supply District
Sewer Service	City of Benton
Electric Service	Ameren
Fire Protection	NBC Fire District
Ambulance Service	North Scott County District

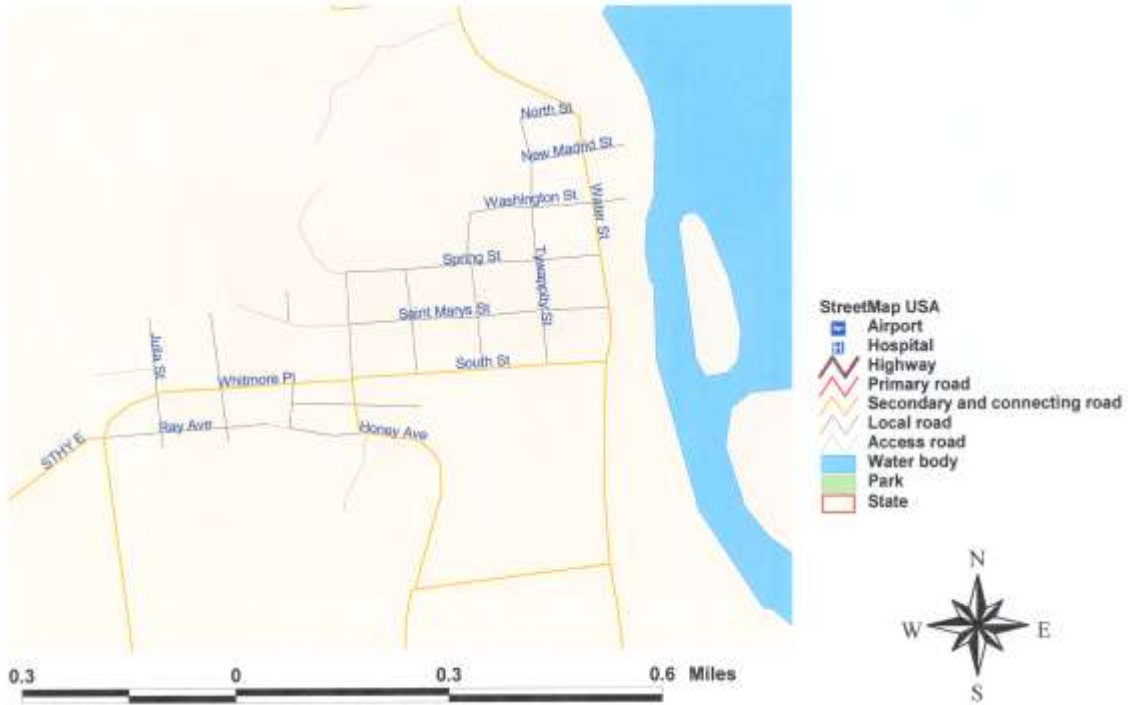
# Sikeston/Miner Community Map



# Oran Community Map



# Commerce Community Map



# Diehlstadt Community Map



# Vanduser Community Map

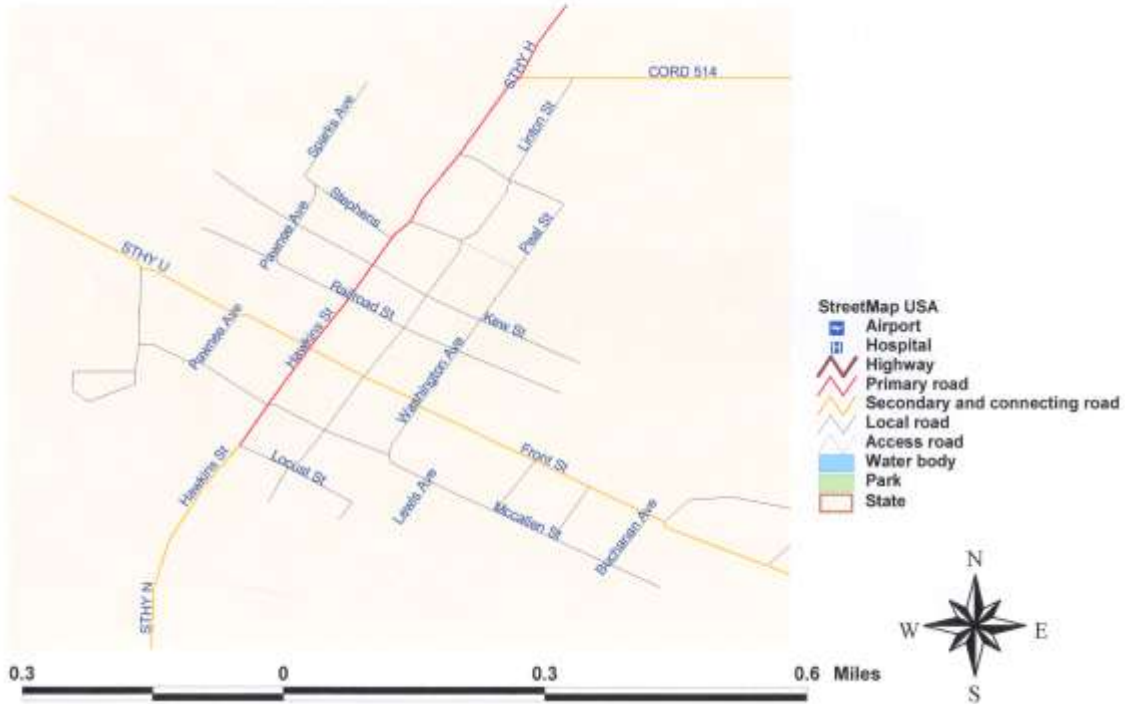


# Haywood City Community Map

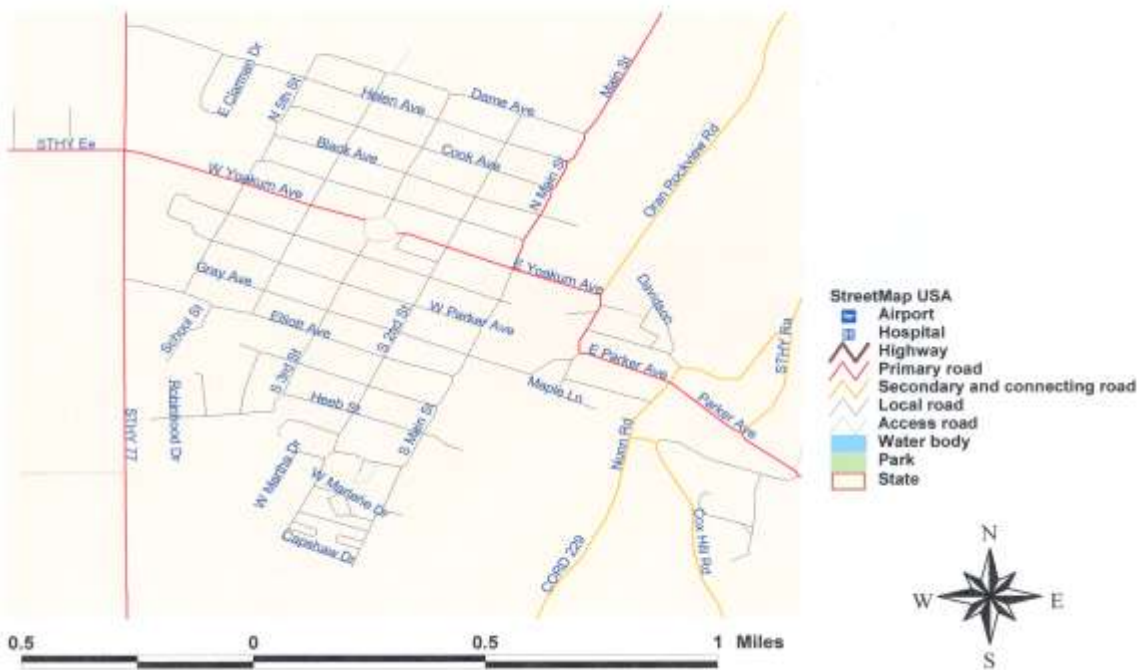




# Blodgett Community Map



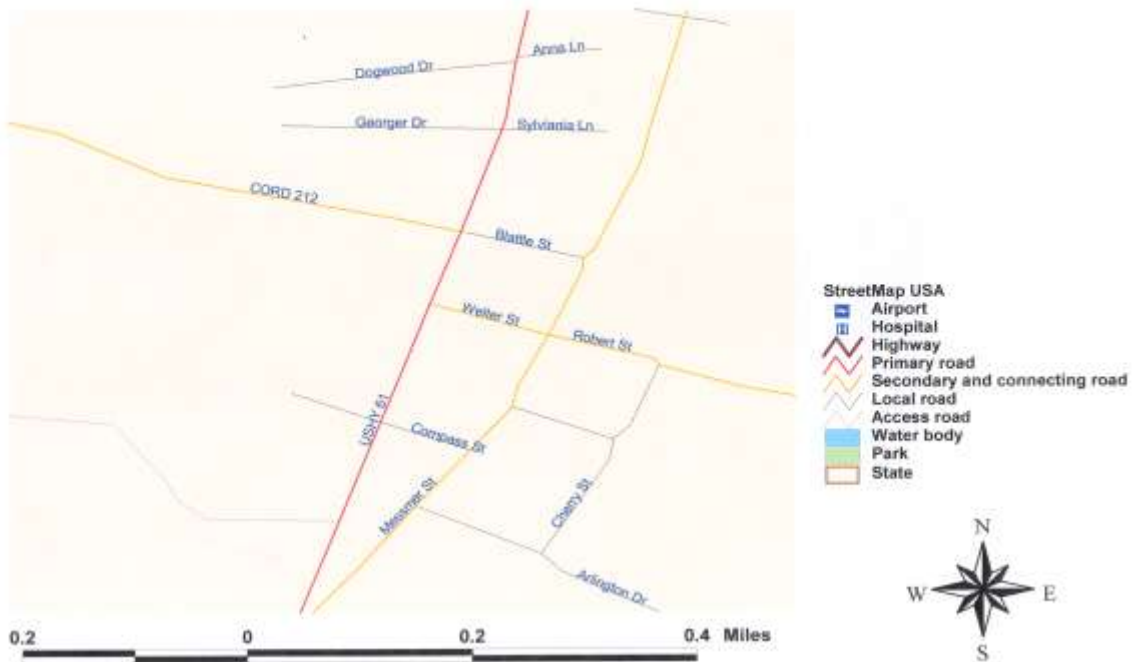
# Chaffee Community Map



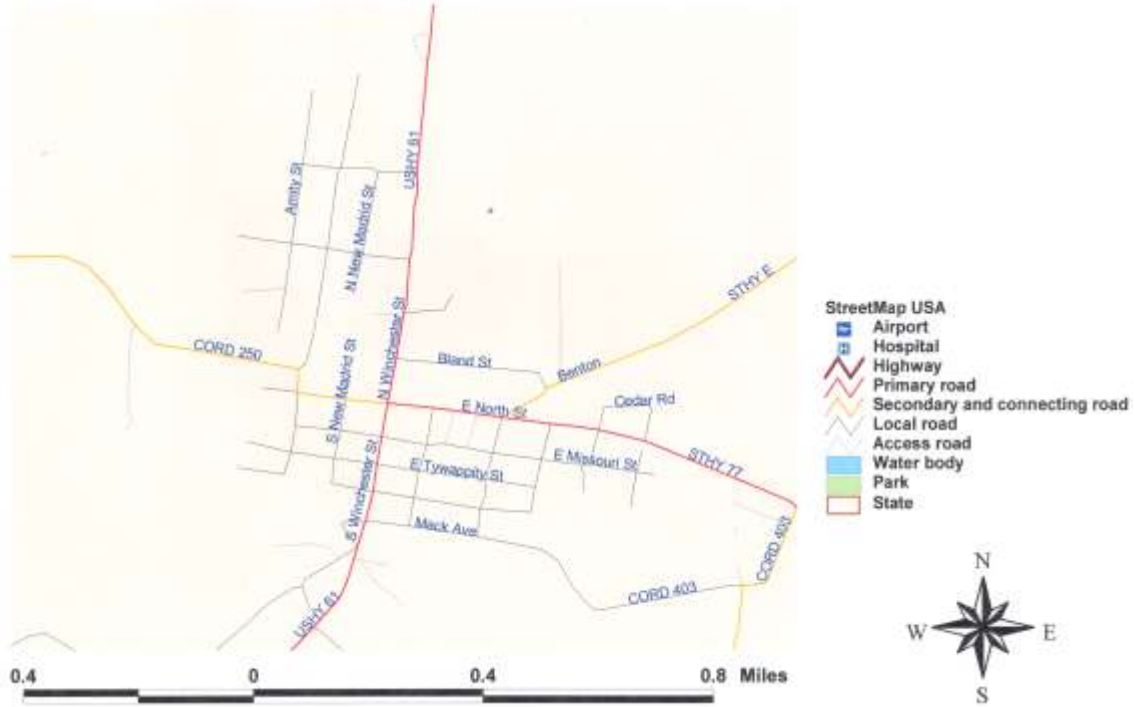
# Scott City Community Map



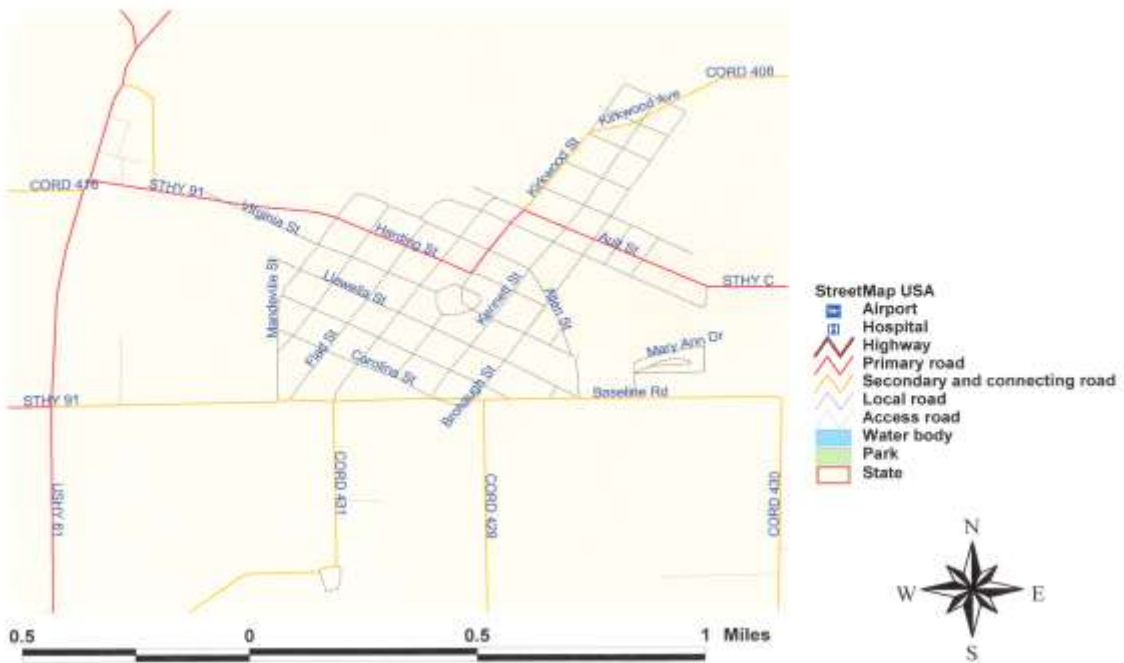
# Kelso Community Map



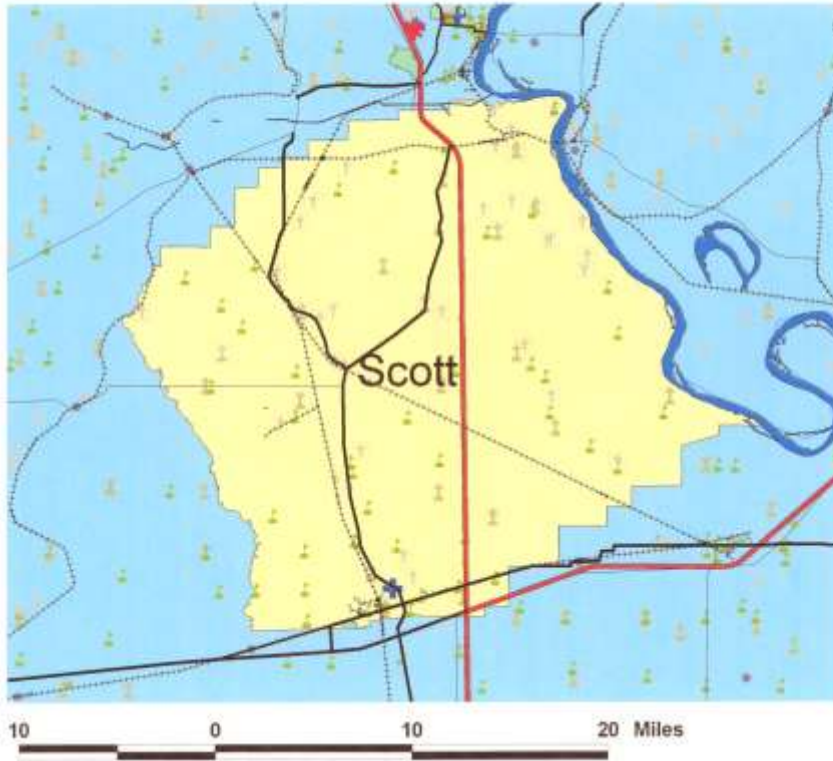
# Benton Community Map



# Morley Community Map



# SCOTT COUNTY



- Urbanize.shp
- Urbanized areaUrban.shp
- Traverses.shp
- Roads.shp
- Rural Interstate
- Rural Minor Arterial
- Rural Principal Arterial
- Urban Collector
- Urban Freeway or Expressway
- Urban Interstate
- Urban Minor Arterial
- Urban Principal Arterial
- No Data
- Network.shp
- Center
- Recreation.shp
- Railroad.shp
- Parks.shp
- Water/Water.shp
- Lands.shp
- Military
- Prison
- Educational
- Amusement
- Government
- Sports
- Gas
- Cemetery
- Verstal.shp
- Verstal.shp
- Hospital
- School
- Church
- Govt Center
- Cemetery
- Scott County
- Airports.shp
- Airport
- Runway
- Roads\_yl.shp
- Roads.shp
- Cities.shp
- Rivers.shp
- Plains.shp
- Lakes.shp
- Drainage.shp

